

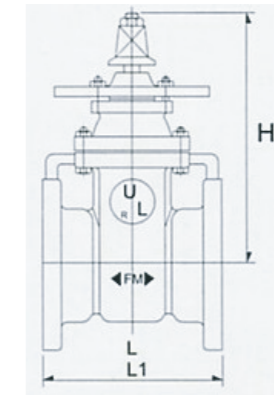


UL/FM 暗杆閘閥 FIG 721U (O.S&Y) 175磅

2 1/2- 12" 175wp



721U



單位: 英寸

口徑	2 1/2	3	4	6	8	10	12
L	7.5	8	9	10.5	11.5	13	14
H	11 15/16	17 25/32	18 1/4	24 1/2	30 1/8	36 3/16	42 1/2
D	7	7 1/2	9	11	13 1/2	16	19
WT LBS	43.6	84.5	95.9	76	279.4	434.5	607.2

零件名稱	材質
閥體 Body	鑄鐵 ASTM A126-B
閥蓋 Bonnet	鑄鐵 ASTM A126-B
閥盤 Disc	APDM
閥杆 Stem	黃銅 ASTM B16
填料 Packing	無石棉填料

怡發金屬工業股份有限公司于1975年始創于臺灣，專業生產用于消防系統的EVER閘閥系列，以及用于水系統的KSW閘閥系列。本廠現已通過ISO-9002認證，用于消防系統的EVER閘閥已通過UL/FM認證，其中包括：明杆閘閥，暗杆閘閥，信號閘閥，旋啟式止回閥，雙瓣式止回閥，柱式指示器。

本公司技術力量雄厚，設計製造經驗豐富。長期以來，產品以其合理的結構，卓越的性能，精湛的工藝，優良的服務，暢銷于國內外相關產業。未來公司將本着“以質量求生存，以服務求發展”的經營理念，繼續奮進，不斷創新。

我們熱忱歡迎海內外各界人士蒞臨指導，希望我們的產品和服務能夠讓您的事業更上一層樓。

ISO-9002
Lic.No:4M4Y001-01

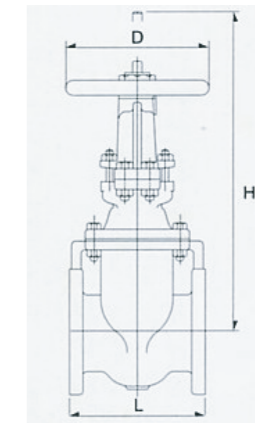


UL/FM 暗杆閘閥 FIG 722U (O.S&Y) 175磅

175WP Conforms to MSS SP-70



722U



單位: 英寸

口徑	2 1/2	3	4	6	8	10	12
L	7.5	8	9	10.5	11.5	13	14
H	14.1	20.9	22.3	30.5	38.2	46.2	54.9
D	7	10	10	12	14	16	18
WT LBS	43.6	84.5	95.9	176	279.4	434.5	607.2

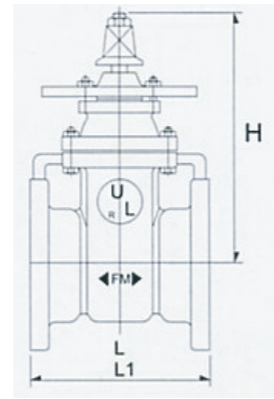
零件名稱	材質
閥體 Body	鑄鐵 ASTM A126-B
閥蓋 Bonnet	鑄鐵 ASTM A126-B
閥盤 Disc	APDM
閥杆 Stem	黃銅 ASTM B16
填料 Packing	無石棉填料



UL/FM 暗杆閘閥 FIG 710U (N.R.S) 175磅
175WP Conforms to MSS SP-70



710U



單位: 英寸

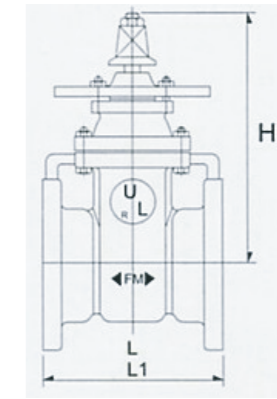
口徑	3	4	6	8	10	12
L	9	10	11.5	11.5	13	14
H	8	9	10.5	11.5	13	14
D	12.1	13.7	18.1	21	24.6	28.2
WT LBS	74	103	179	261	409	552

零件名稱	材質
閥體 Body	鑄鐵 ASTM A126-B
閥蓋 Bonnet	鑄鐵 ASTM A126-B
閥盤 Disc	鑄鐵 ASTM A126-B
閥杆 Stem	黃銅 ASTM B16
座環 Seat Ring	鑄銅 ASTM B62

UL/FM 暗杆閘閥 FIG 721H (O.S&Y) 250磅
2 1/2- 12" 250wp



721H



單位: 英寸

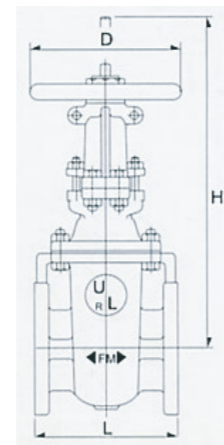
口徑	2 1/2	3	4	6	8	10	12
L	7.5	8	9	10.5	11.5	13	14
H	11 15/16	17 25/32	18 1/4	24 1/2	30 1/8	36 3/16	42 1/2
D	7	7 1/2	9	11	13 1/2	16	19
WT LBS	43.6	84.5	95.9	76	279.4	434.5	607.2

零件名稱	材質
閥體 Body	鑄鐵 ASTM A126-B
閥蓋 Bonnet	鑄鐵 ASTM A126-B
閥盤 Disc	APDM
閥杆 Stem	黃銅 ASTM B16
填料 Packing	無石棉填料

UL/FM 明杆閘閥 FIG 762U (O.S&Y) 175磅
175WP Conforms to MSS SP-70



762U



單位: 英寸

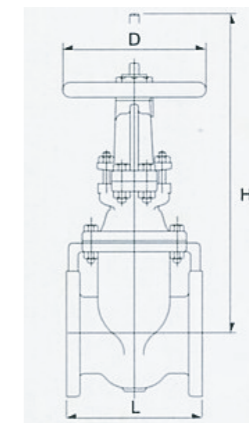
口徑	2	2 1/2	3	4	6	8	10	12
L	7	7.5	8	9	10.5	11.5	13	14
H	14.7	16.7	18.9	23.4	32.2	39.5	48.2	56.1
D	7	7	8	10	12	14	16	18
WT LBS	36	48	60	103	186	298	441	628

零件名稱	材質
閥體 Body	鑄鐵 ASTM A126-B
閥蓋 Bonnet	鑄鐵 ASTM A126-B
閥盤 Disc	鑄鐵 ASTM A126-B
閥杆 Stem	黃銅 ASTM B16
填料 Packing	無石棉填料

UL/FM 明杆閘閥 FIG 722H (O.S&Y) 250磅
250WP Conforms to MSS SP-70



722H



單位: 英寸

口徑	2 1/2	3	4	6	8	10	12
L	7.5	8	9	10.5	11.5	13	14
H	14.1	20.9	22.3	30.5	38.2	46.2	54.9
D	7	10	10	12	14	16	18
WT LBS	43.6	84.5	95.9	176	279.4	434.5	607.2

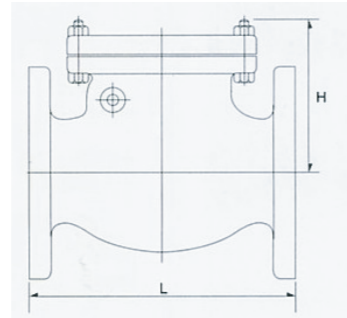
零件名稱	材質
閥體 Body	鑄鐵 ASTM A126-B
閥蓋 Bonnet	鑄鐵 ASTM A126-B
閥盤 Disc	APDM
閥杆 Stem	黃銅 ASTM B16
填料 Packing	無石棉填料

UL/FM 旋啓式止回閥 FIG 763U (N.R.S)200磅

200WP Conforms to MSS SP-70



763U



單位: 英寸

口徑	2	2 1/2	3	4	5	6	8	10	12
L	8	8.5	9.5	11.5	13	14	19.5	24.5	27.5
H	4.7	5.4	5.8	6.7	7.8	8.5	10.4	11.9	13.5
WT LBS	25	36	46	81	115	150	253	442	638

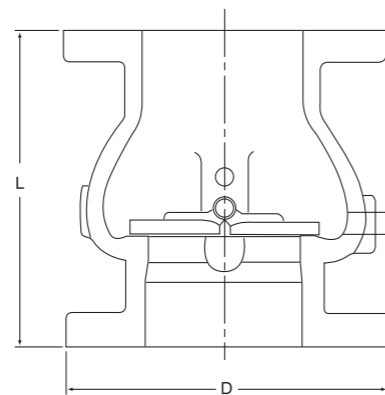
零件名稱	材質
閥體 Body	鑄鐵 ASTM A126-B
閥蓋 Bonnet	鑄鐵 ASTM A126-B
閥盤 Disc	鑄鐵 ASTM A126-B
座環 Seat Ring	鑄銅 ASTM B62

UL/FM 球墨鑄鐵法蘭雙瓣止回閥 FIG 453UF (O.S&Y) 200磅

200WP Conforms to MSS SP-70



453UF



單位: 英寸

口徑	2	2 1/2	3	4	6	8	10	12
L	7	7.5	8	9	10.5	11.5	13	14
D	7	7	8	10	12	14	16	18
WT LBS	36	48	60	103	186	298	441	628

零件名稱	材質
閥體 Body	鑄鐵 ASTM A126-B
閥蓋 Bonnet	鑄鐵 ASTM A126-B
閥盤 Disc	鑄鐵 ASTM A126-B
閥杆 Stem	黃銅 ASTM B16
填料 Packing	無石綿填料



5

UL/FM 800 柱式指示器(立式)

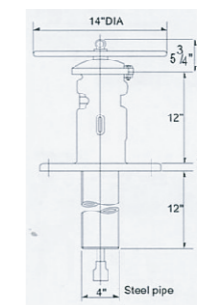


柱式指示器 800

掛牆式 800W

零件名稱	材質
閥體 Body	鑄鐵 ASTM A126-B
手輪轉盤 Hand wheel	鑄鐵 ASTM A126-B
操作板手 Operating wrench	延伸鐵 ASTM A-536
中軸 Operating stem	鑄銅 ASTM B26
閥蓋 Cap	鑄鐵 ASTM A126-B
延伸杆 Extension Rod	Mild steel ASTM A105-80

UL/FM 800W 掛牆式指示器



掛牆式 800W

掛牆式 800W

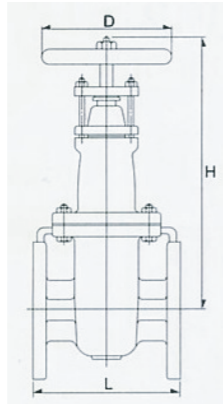
零件名稱	材質
閥體 Body	鑄鐵 ASTM A126-B
手輪轉盤 Hand wheel	鑄鐵 ASTM A126-B
操作板手 Operating wrench	鑄銅 ASTM A-536
閥蓋 Cap	鑄鐵 ASTM B26
延伸杆 Extension Rod	Mild steel ASTM A126-B
插口座 Socket	鑄鐵 ASTM A105-80



6

暗杆閘閥 FIG 761A (N.R.S)125磅

125WP.200 WOG/Conforms to MSS SP-70



761A

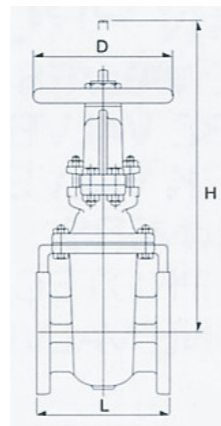
單位: 英寸

尺寸	2	2 1/2	3	4	5	6	8	10	12	14	16	18	20	24
L	7	7.5	8	9	10	10.5	11.5	13	14	15	16	17	18	20
H	12.3	13.3	15	17.8	20.1	23.1	27.8	32.9	37.4	41.4	46.9	46.9	54.9	64.3
D	7	7	8	10	12	12	14	16	18	20	22	24	24	30
WT LBS	33	44	55	95	132	172	271	361	578	880	1165	1462	1801	2600

零件名稱	材質
閥體 Body	鑄鐵 ASTM A126-B
閥蓋 Bonnet	鑄鐵 ASTM A126-B
閥盤 Disc	鑄鐵 ASTM A126-B
閥杆 Stem	黃銅 ASTM B16
座環 Seat Ring	鑄銅 ASTM B62
填料 Packing	無石棉填料

明杆閘閥 FIG 762A (N.R.S)125磅

125WP.200 WOG/ Conforms to MSS SP-70



762A

單位: 英寸

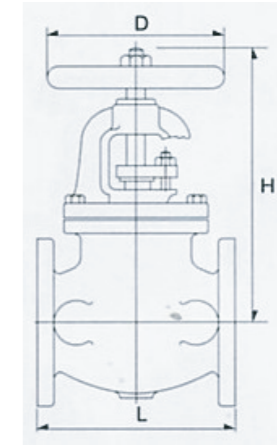
尺寸	2	2 1/2	3	4	5	6	8	10	12	14	16	18	20	24
L	7	7.5	8	9	10	10.5	11.5	13	14	15	16	17	18	20
H	14.7	16.7	18.9	23.4	27.7	32.2	39.5	48.2	56.1	62.5	71.1	79	87.1	100.5
D	7	7	8	10	12	12	14	16	18	20	22	24	24	30
WT LBS	36	48	60	103	143	186	298	441	628	880	1166	1467	1824	2618

零件名稱	材質
閥體 Body	鑄鐵 ASTM A126-B
閥蓋 Bonnet	鑄鐵 ASTM A126-B
閥盤 Disc	鑄鐵 ASTM A126-B
閥杆 Stem	黃銅 ASTM B16
座環 Seat Ring	鑄銅 ASTM B62
填料 Packing	無石棉填料



截止閥 FIG 765A 125磅

125WP. 200 WOG/Coforms to MSS SP-85



765A

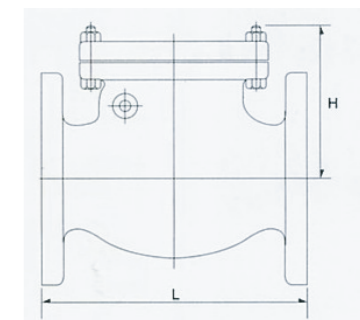
單位: 英寸

尺寸	2	2 1/2	3	4	5	6	8	10	12	14
L	8	8.5	9.5	11.5	13	14	19.5	24.5	27.5	31
H	11.9	12.8	13.6	14.6	17.7	19.7	22.7	27	29.8	34.5
D	6	7	7.5	9	10	11	13.5	16	19	20
WT Lbs	36	49	57	95	139	183	378	523	700	997

零件名稱	材質
閥體 Body	鑄鐵 ASTM A126-B
閥蓋 Bonnet	鑄鐵 ASTM A126-B
閥盤 Disc	2"-3"鑄銅 ASTM B62 4"-12"鑄鐵 ASTM 126-B
閥杆 Stem	黃銅 ASTM B16
座環 Seat Ring	鑄銅 ASTM B62
填料 Packing	無石棉填料

旋啟式止回閥 FIG 763A 125磅

125WP.200 WOG/ Conforms to MSS SP-71



763A

單位: 英寸

口徑	2	2 1/2	3	4	5	6	8	10	12
L	8	8.5	9.5	11.5	13	14	19.5	24.5	27.5
H	4.7	5.4	5.8	6.7	7.8	8.5	10.4	11.9	13.5
WT LBS	25	36	46	81	115	150	253	442	638

零件名稱	材質
閥體 Body	鑄鐵 ASTM A126-B
閥蓋 Bonnet	鑄鐵 ASTM A126-B
閥盤 Disc	鑄鐵 ASTM A126-B
座環 Seat Ring	鑄銅 ASTM B62

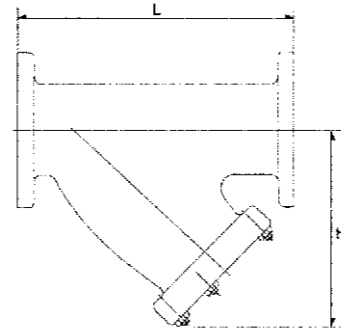


Y型過濾器 FIG 754A 125磅

125lb CAST IRON STRAINERS FLANGED ENDS Y-TYPE



754A



單位: 英寸

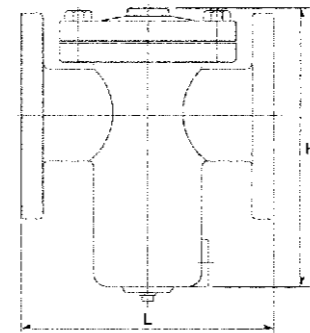
尺寸	2	2 1/2	3	4	5	6	8	10	12	14	16
L	9.88	11.25	12.5	14.88	17.94	20.38	24	29.5	33.75	37.25	42.37
H	6.19	7.36	8.25	10.06	12.5	14.31	17.38	20.88	23.56	27.09	29.25
WT Lbs	23	37	44	78	110	147	238	414	590	790	1144

零件名稱	材質	
閥體 Body	鑄鐵	ASTM A126-B
包覆 Cover	鑄鐵	ASTM A126-B
濾網 Screen	不銹鋼	ASTM A167 304

桶型過濾器 FIG 764A 125磅 Basket Strainer



764A



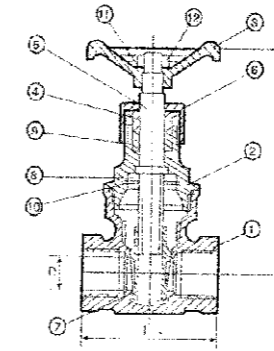
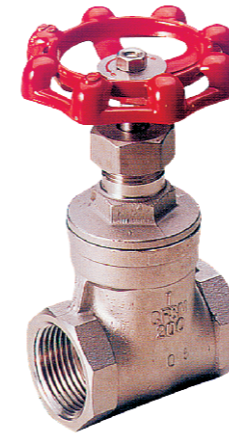
單位: 英寸

尺寸	2	2 1/2	3	4	5	6	8	10	12	14	16	18	20
L	8	8.25	9.75	11.5	13.13	14.75	18.5	20.13	26.25	30.25	33.13	38.38	41.25
H	8.3	9.63	11.25	12.75	14.63	15.63	20.63	24.5	29.75	36.34	38.16	39.84	46.34
WT Lbs	22.4	32.6	44	66.4	87.6	119.7	220	352.9	522.7	814	1040.6	1965	2530

零件名稱	材質	
閥體 Body	鑄鐵	ASTM A126-B
包覆 Cover	鑄鐵	ASTM A126-B
濾網 Screen	不銹鋼	ASTM A167 304

Stainless Steel Gate Valve 不銹鋼閘閥 200 WOG

SS20S



單位: mm

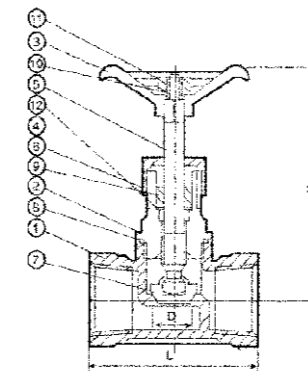
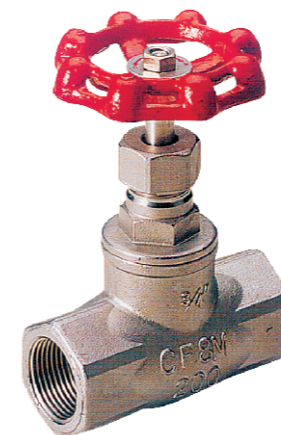
口徑	15	20	25	32	40	50
L	55	60	65	75	85	85
H	95	102	115	127	150	170
D	70	70	80	80	90	100

工作壓力 Working pressure	
180°C 以下的靜流水 Non-shock water under 180°C	14Kgf/cm ²
飽和蒸氣 Saturated steam	10Kgf/cm ²
壓力測試 Hydrostatic test preeure	
閥體 Shell	20Kgf/cm ²
閥座 Seat	15Kgf/cm ²

零件名稱	材質
閥體 Body	CF8M
閥蓋 Bonnet	CF8M
閥杆 Stem	SUS 316
閥盤 Disc	SUS 316
螺栓 Gland	SUS 304
螺帽 Gland nut	SUS 304
手輪轉盤 Handwheel	Mico Stel

Stainless Steel Globe Valve 不銹鋼截止閥 WOG

SG20S



單位: mm

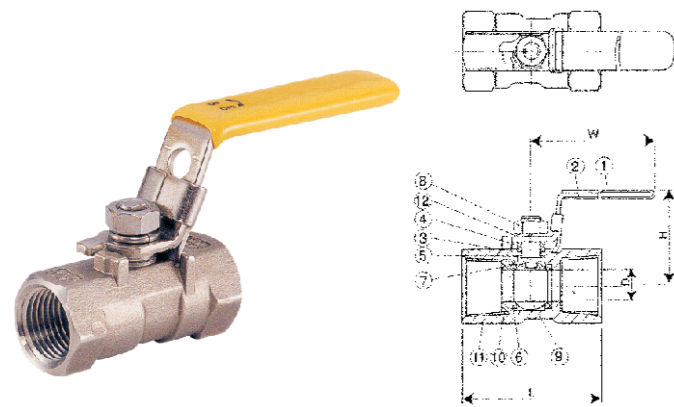
口徑	15	20	25	32	40	50
L	52	60	72	80	91	101
H	89	97	107	125	140	165
D	57	70	80	90	90	100

工作壓力 Working pressure	
180°C 以下的靜流水 Non-shock water under 180°C	14Kgf/cm ²
飽和蒸氣 Saturated steam	10Kgf/cm ²
壓力測試 Hydrostatic test preeure	
閥體 Shell	20Kgf/cm ²
閥座 Seat	15Kgf/cm ²

零件名稱	材質
閥體 Body	CF8M
閥蓋 Bonnet	CF8M
閥杆 Stem	SUS 316
閥盤 Disc	SUS 316
螺栓 Gland	SUS 304
螺帽 Gland nut	SUS 304
手輪轉盤 Handwheel	Mico Stel

One Piece Stainless Steel Ball Valve 一片式不銹鋼球閥 800 WOG

SA80S-1



工作壓力 Working pressure	
180°C 以下的靜流水 Non-shock water under 180°C	56Kgf/cm ²
飽和蒸氣 Saturated steam	10Kgf/cm ²

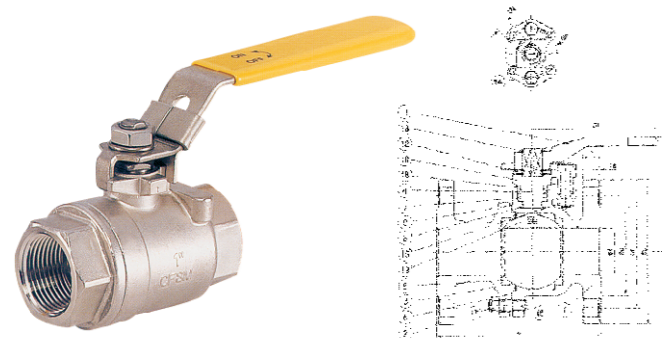
零件名稱	材質
閥體 Body	CF8M
閥蓋 Bonnet	CF8M
閥杆 Stem	SUS 316
閥盤 Disc	SUS 316
螺栓 Gland	SUS 304
螺帽 Gland nut	SUS 304
手輪轉盤 Handwheel	Mico Stel

單位: mm

口徑	8	10	15	20	25	32	40	50
L	39	44	56	59	71	78	83	100
H	5	7	9.2	12.5	16	20	24.5	32
D	31	36	41	44	48	54	65	72

Two Pieces Stainless Steel Ball Valve 兩片式不銹鋼球閥 1000 WOG

SA100S-2



工作壓力 Working pressure	
180°C 以下的靜流水 Non-shock water under 180°C	70Kgf/cm ²
飽和蒸氣 Saturated steam	10Kgf/cm ²

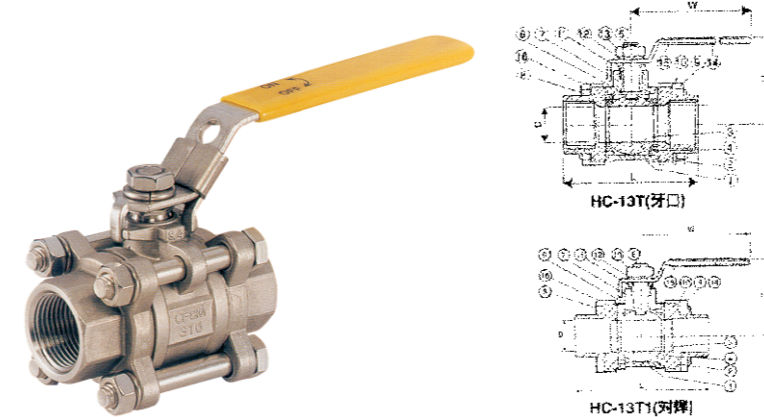
零件名稱	材質
閥體 Body	CF8M
閥蓋 Bonnet	CF8M
閥杆 Stem	SUS 316
閥盤 Disc	SUS 316
螺栓 Gland	SUS 304
螺帽 Gland nut	SUS 304
手輪轉盤 Handwheel	Mico Stel

單位: mm

口徑	8	10	15	20	25	32	40	50
L	48	48	61	65	77	89	100	120
H	11.6	11.6	15	20	25	32	38.1	50
D	42	42	46.2	54.3	57.8	66.5	71.5	84.5

Three Pieces Stainless Steel Ball Valve 三片式不銹鋼絲口球閥 1000 WOG

SA100S-3



工作壓力 Working pressure	
Water, Oil, Air at normal temperatur	70Kgf/cm ²
飽和蒸氣 Saturated steam	10Kgf/cm ²

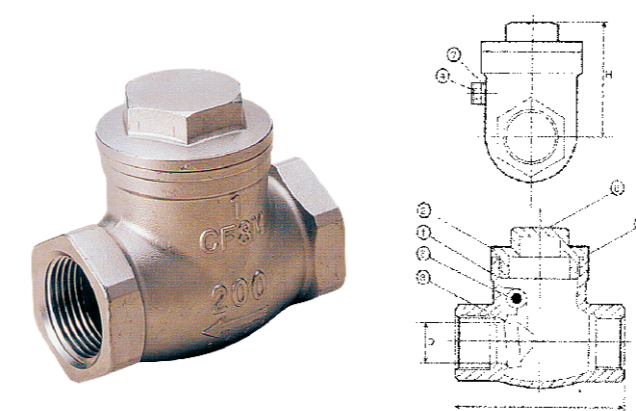
零件名稱	材質
閥體 Body	CF8M
閥蓋 Bonnet	CF8M
閥杆 Stem	SUS 316
閥盤 Disc	SUS 316
螺栓 Gland	SUS 304
螺帽 Gland nut	SUS 304
手輪轉盤 Handwheel	Mico Stel

單位: mm

口徑	8	10	15	20	25	32	40	50	65	80	100
L	61	61	70	80	90	110	120	140	165	188	232
H	11.6	13	15	20	25	32	38	50	65	80	100
D	44	44	46	52	57	72	76	85	119	128	158

Stainless Steel Swing Check Valve 不銹鋼絲口止回閥 200 WOG

SC20S

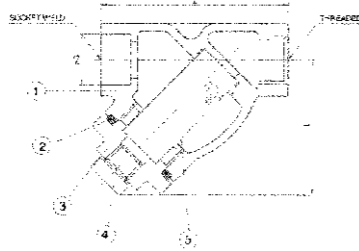


工作壓力 Working pressure	
180°C 以下的靜流水 Non-shock water under 180°C	14Kgf/cm ²
飽和蒸氣 Saturated steam	10Kgf/cm ²
壓力測試 Hydrostatic test preeure	
閥體 Shell	20Kgf/cm ²
閥座 Seat	15Kgf/cm ²

零件名稱	材質
閥體 Body	CF8M
閥蓋 Bonnet	CF8M
閥杆 Stem	SUS 316
閥盤 Disc	SUS 316
螺栓 Gland	SUS 304
螺帽 Gland nut	SUS 304
手輪轉盤 Handwheel	Mico Stel

單位: mm

口徑	15	20	25	32	40	50
L	65	80	90	105	120	140
H	48	55	62	70	80	90
D	15	20	25	32	38	50



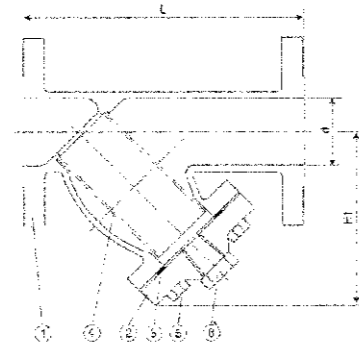
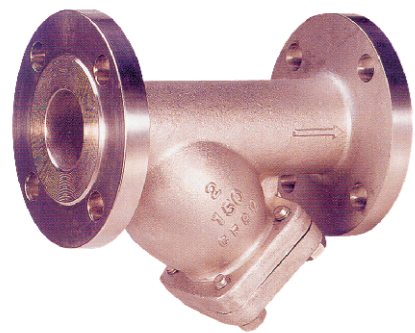
單位: mm

口徑	8	10	15	20	25	32	40	50
L	65	65	65	80	90	105	120	140
H	46	46	46	55	70	73	81	94

工作壓力 Working pressure	
120℃ 以下的靜流水 Non-shock water under 120℃	20Kgf/cm ²
飽和蒸氣 Saturated steam	10Kgf/cm ²
壓力測試 Hydrostatic test preeure	
閥體 Shell	20Kgf/cm ²

零件名稱	材質
閥體 Body	CF8M
閥蓋 Bonnet	CF8M
閥杆 Stem	SUS 316
閥盤 Disc	SUS 316
螺栓 Gland	SUS 304
螺帽 Gland nut	SUS 304
手輪轉盤 Handwheel	Mico Stel

Stainless Steel Y-Strainer 不銹鋼Y型過濾器 300 WOG SY15F

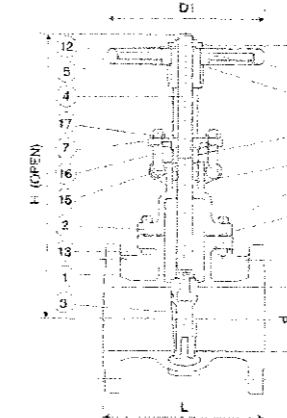
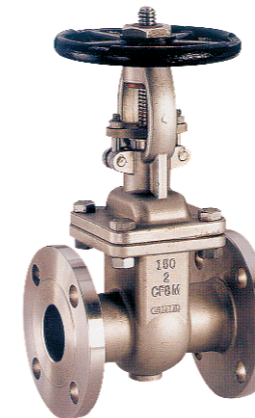


單位: mm

口徑	50	65	80	100	125	150	200	250	300
L	210	250	280	340	380	420	500	700	780
H	140	175	196	244	277	320	390	430	600
D	155	175	185	210	250	280	330	400	445

工作壓力 Working pressure	
120℃ 以下的靜流水 Non-shock water under 120℃	14Kgf/cm ²
飽和蒸氣 Saturated steam	12Kgf/cm ²
壓力測試 Hydrostatic test preeure	
閥體 Shell	20Kgf/cm ²
閥座 Seat	15Kgf/cm ²

零件名稱	材質
閥體 Body	CF8M
閥蓋 Bonnet	CF8M
閥杆 Stem	SUS 316
閥盤 Disc	SUS 316
螺栓 Gland	SUS 304
螺帽 Gland nut	SUS 304
手輪轉盤 Handwheel	Mico Stel



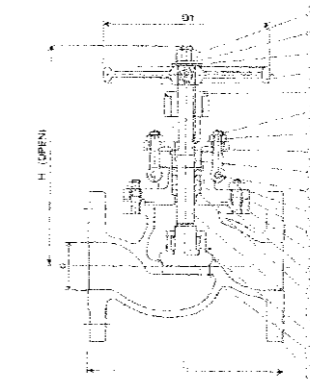
單位: mm

口徑	50	65	80	100	125	150	200	250	300	350	400	450	500
L	178	190	203	229	254	267	292	330	356	381	406	432	458
H	278	322	366	460	530	572	727	873	1025	1138	1279	1492	1612
D	150	150	200	250	280	300	300	350	400	450	500	550	600

工作壓力 Working pressure	
120℃ 以下的靜流水 Non-shock water under 120℃	14Kgf/cm ²
Steam, Water, Oil, Air under 220℃	12Kgf/cm ²
Steam, Oil, Air under 300℃	10Kgf/cm ²
壓力測試 Hydrostatic test preeure	
閥體 Shell	20Kgf/cm ²
閥座 Seat	15Kgf/cm ²

零件名稱	材質
閥體 Body	CF8M
閥蓋 Bonnet	CF8M
閥杆 Stem	SUS 316
閥盤 Disc	SUS 316
螺栓 Gland	SUS 304
螺帽 Gland nut	SUS 304
手輪轉盤 Handwheel	Mico Stel

Stainless Steel Gate Valve (Rising Stem) 不銹鋼法蘭截止閥10K-150磅 SG15F



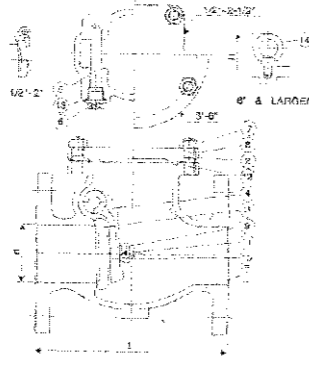
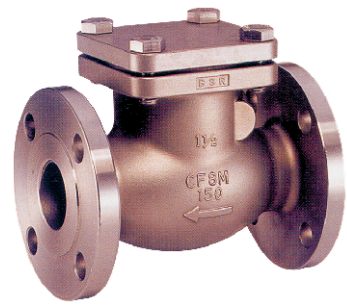
單位: mm

口徑	50	65	80	100	125	150	200	250	300	350	400	450	500
L	178	190	203	229	254	267	292	330	356	381	406	432	458
H	278	322	366	460	530	572	727	873	1025	1138	1279	1492	1612
D	150	150	200	250	280	300	300	350	400	450	500	550	600

工作壓力 Working pressure	
120℃ 以下的靜流水 Non-shock water under 120℃	14Kgf/cm ²
Steam, Water, Oil, Air under 220℃	12Kgf/cm ²
Steam, Oil, Air under 300℃	10Kgf/cm ²
壓力測試 Hydrostatic test preeure	
閥體 Shell	20Kgf/cm ²
閥座 Seat	15Kgf/cm ²

零件名稱	材質
閥體 Body	CF8M
閥蓋 Bonnet	CF8M
閥杆 Stem	SUS 316
閥盤 Disc	SUS 316
螺栓 Gland	SUS 304
螺帽 Gland nut	SUS 304
手輪轉盤 Handwheel	Mico Stel

Stainless Steel Swing Check Valve 不銹鋼絲口截止閥 10K-150磅 SC15F-S



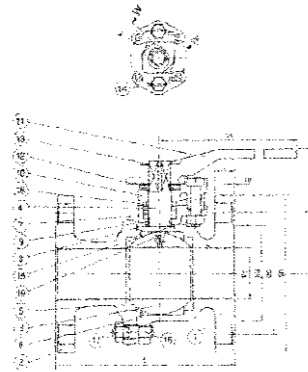
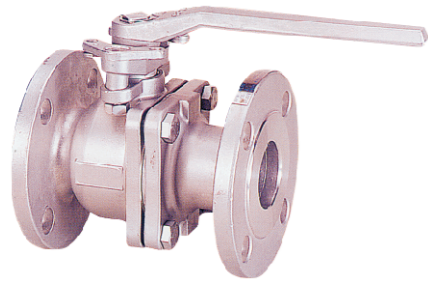
工作壓力 Working pressure	
120℃ 以下的靜流水 Non-shock water under 120℃	14Kgf/cm ²
Steam, Water, Oil, Air under 220℃	12Kgf/cm ²
Steam, Oil, Air under 300℃	10Kgf/cm ²
壓力測試 Hydrostatic test preeeure	
閥體 Shell	20Kgf/cm ²
閥座 Seat	15Kgf/cm ²

零件名稱	材質
閥體 Body	CF8M
閥蓋 Bonnet	CF8M
閥杆 Stem	SUS 316
閥盤 Disc	SUS 316
螺栓 Gland	SUS 304
螺帽 Gland nut	SUS 304
手輪轉盤 Handwheel	Mico Stel

單位: mm

口徑	50	65	80	100	125	150	200	250	300	350	400	450
L	203	216	241	292	330	356	495	622	699	787	864	978
H	110	120	120	160	170	185	250	390	428	453	490	520
D	155	175	185	210	250	280	330	406	482	533	597	635

Stainless Steel Ball Valve 不銹鋼法蘭口球閥 10K-150磅 SA15F-F



工作壓力 Working pressure	
120℃ 以下的靜流水 Non-shock water under 120℃	14Kgf/cm ²
Steam, Water, Oil, Air under 220℃	12Kgf/cm ²
壓力測試 Hydrostatic test preeeure	
閥體 Shell	20Kgf/cm ²
閥座 Seat	15Kgf/cm ²

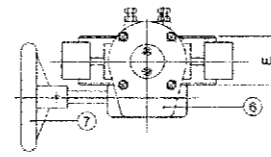
零件名稱	材質
閥體 Body	CF8M
閥蓋 Bonnet	CF8M
閥杆 Stem	SUS 316
閥盤 Disc	SUS 316
螺栓 Gland	SUS 304
螺帽 Gland nut	SUS 304
手輪轉盤 Handwheel	Mico Stel

單位: mm

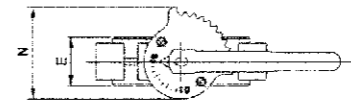
口徑	15	20	25	32	40	50	65	80	100	125	150
L	108	117	127	140	165	178	190	203	229	356	394
H	81	84	93	97	113	120	150	161	189	207	237
D	130	130	160	160	230	230	400	400	460	460	1040

Lug Type Butterfly Valves(2"-24", DN50-DN600) - 多耳式蝶閥 Cast Iron & Ductile Iron Body (灰鑄鐵、球墨鑄鐵閥體)

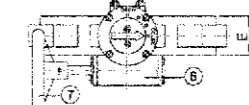
2"-12" WORM GAEAR TYPE



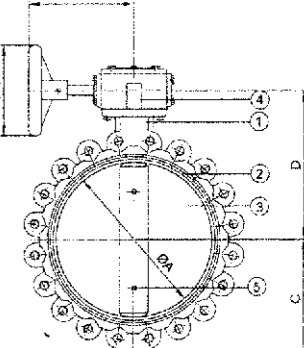
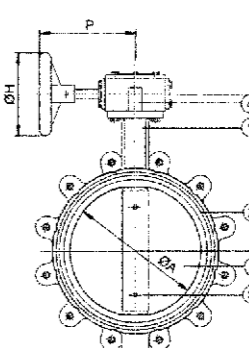
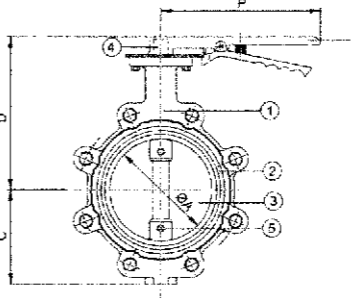
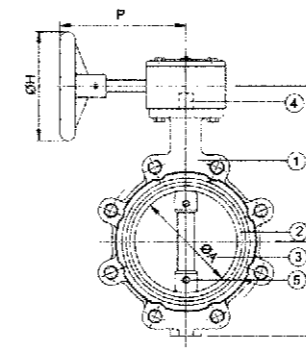
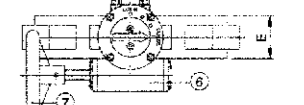
2"-12" LEVER TYPE



14"-18" WORM GEAR TYPE



20"-24" WORM GEAR TYPE



Parts & Material List (零部件及材質表)

Item 項次	Part Name 零部件名稱	Material 材質名稱	材質編號 (Description)	
			JIS	ASTM
1	Body (閥體)	Cast Steel (鑄鐵)	FC200	A126 Class B
		Stainless Steel (不銹鋼)	FCD450	A536-65-45-12
2	Seat (閥座)	丁腈橡膠	Buna-N(NBR)	
		三元乙丙橡膠	EPDM	
3	Disc (閥板)	Ductile Iron (球墨鑄鋼)	FCD450	A536-65-45-12
		Stainless Steel (不銹鋼)	SCS13	A315-CF8
			SCS14	A315-CF8M
4	Shaft (閥杆)	Stainless Steel (不銹鋼)	SUS410	A182 F410
			SUS304	A182 F304
			SUS316	A182 F316
5	Set Pin (定位螺絲)	Stainless Steel (不銹鋼)	SUS316	A182 F316
6	Wormgear Box (蝸輪箱)	Cast Iron (灰鑄鐵)	FC200	A126 Class B
7	Hand Wheel (手輪)	Cast Iron (灰鑄鐵)	FC200	A126 Class B
8	Lever Handle (手柄)	Ductalloy Iron (球墨鑄鐵)	FCD450	A536-65-45-12

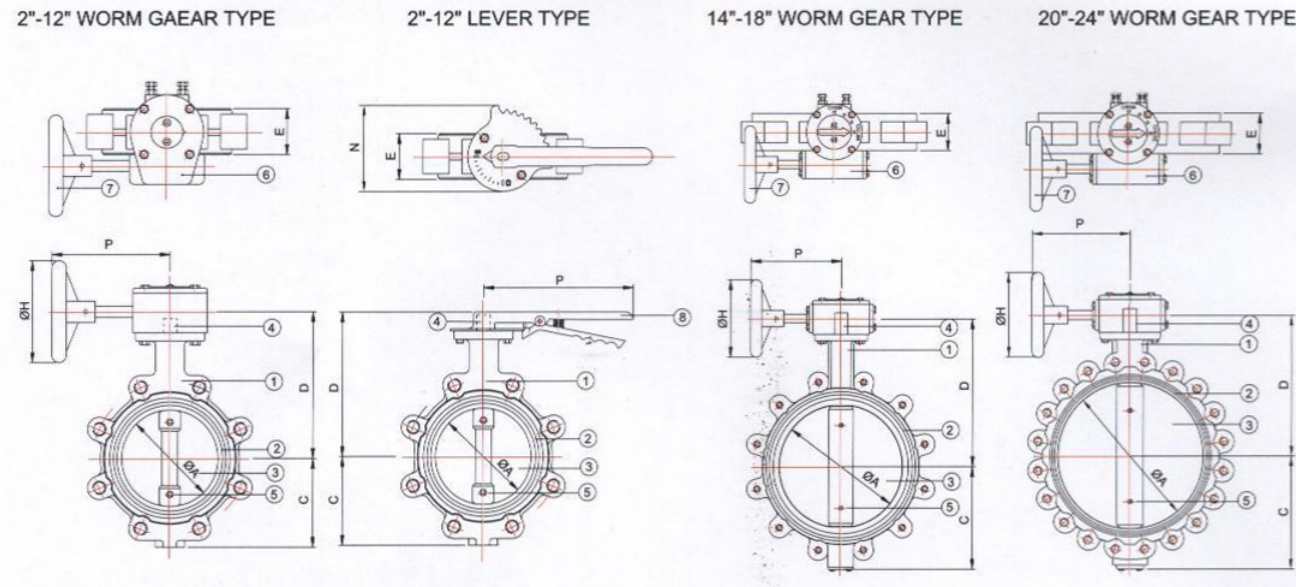
Dimension List (尺寸表)

SIZE	IN	2	2.5	3	4	5	6	8	10	12	14	16	18	20	24
	MM	50	65	80	100	125	150	200	250	300	350	400	450	500	600
VALVE	ØA	50	65	80	99	124	146	199	250	299	328	380	431	489	588
	C	66	79	91	110	124	140	176	210	240	274	315	345	390	465
LEVER	E	43	46	46	52	56	56	60	68	78	78	102	114	127	154
	D	168	178	186	200	219	232	263	298	333	-	-	-	-	-
	P	170	170	170	250	250	250	410	410	410	-	-	-	-	-
WORM GEAR	N	107	107	107	107	107	107	125	135	135	-	-	-	-	-
	D	168	178	186	203	216	237	289	321	373	390	400	430	498	575
	P	170	170	170	170	170	170	260	260	260	280	300	300	330	330
ØH	160	160	160	160	160	160	250	250	250	305	305	305	457	457	

* Other Size & Material Upon Your Request. (其它尺寸及材質可依要求制作)

Lug Type Butterfly Valves (2"-24", DN50-DN600) - 多耳式蝶閥

Cast Iron & Ductile Iron Body (灰鑄鐵、球墨鑄鐵閥體)



Parts & Material List (零部件及材質表)

Item 項次	Part Name 零部件名稱	Material 材質名稱	材質編號 (Description)	
			JIS	ASTM
1	Body (閥體)	Cast Steel (鑄鐵)	FC200	A216 Class B
		Ductalloy Iron (球墨鑄鐵)	FCD450	A536-65-45-12
2	Seat (閥座)	丁腈橡膠	Buna-N(NBR)	
		三元乙丙橡膠	EPDM	
3	Disc (閥板)	Ductalloy Iron (球墨鑄鐵)	FCD450	A536-65-45-12
		Stainless Steel (不銹鋼)	SCS13	A351-CF8
4	Shaft (閥杆)	Stainless Steel (不銹鋼)	SUS410	A182 F410
			SUS304	A182 F304
			SUS316	A182 F316
5	Set Pin (定位螺絲)	Stainless Steel (不銹鋼)	SUS316	A182 F316
6	Wormgear Box (蝸輪箱)	Cast Iron (灰鑄鐵)	FC200	A126 Class B
7	Hand Wheel (手輪)	Cast Iron (灰鑄鐵)	FC200	A126 Class B
8	Lever Handle (手柄)	Ductalloy Iron (球墨鑄鐵)	FCD450	A536-65-45-12

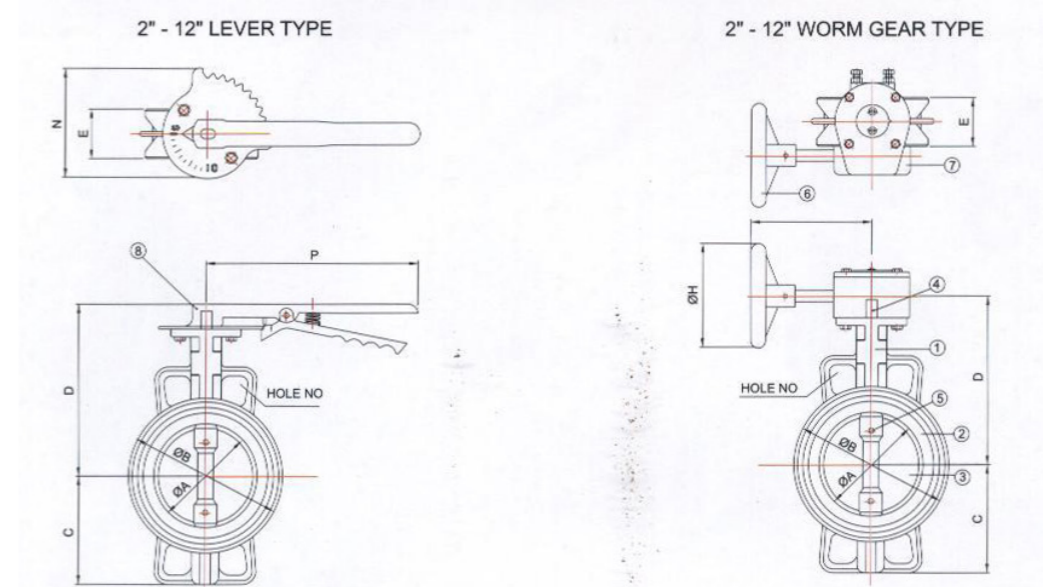
Dimension List (尺寸表)

SIZE	IN	2	2.5	3	4	5	6	8	10	12	14	16	18	20	24
	MM	50	65	80	100	125	150	200	250	300	350	400	450	500	600
VALVE	ØA	50	65	80	99	124	149	199	250	299	328	380	431	489	588
	C	66	79	91	110	124	240	176	210	240	274	315	345	390	465
LEVER	E	43	46	46	52	56	56	60	68	78	78	102	114	127	154
	D	168	178	186	200	219	232	263	298	333	-	-	-	-	-
	P	170	170	170	250	250	250	410	410	410	-	-	-	-	-
WORM GEAR	N	107	107	107	107	107	107	135	135	135	-	-	-	-	-
	D	168	178	186	203	216	237	289	321	373	390	400	430	498	575
	P	170	170	170	170	170	170	260	260	260	280	300	300	330	330
ØH	160	160	160	160	160	160	250	250	250	305	305	305	457	457	

* Other Size & Material Upon Your Request. (其它尺寸及材質可依要求制作)

Wafer Type Butterfly Valves (2"-24", DN50-DN600) - 對夾式蝶閥

Stainless Steel & Cast Steel Body (不銹鋼、鑄鋼閥體)

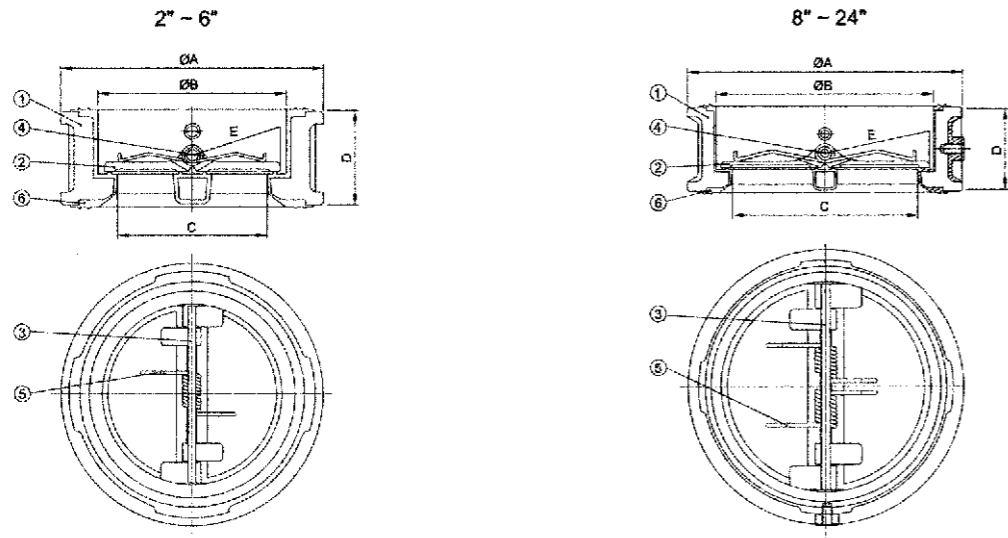


Parts & Material List (零部件及材質表)

Item 項次	Part Name 零部件名稱	Material 材質名稱	材質編號 (Description)	
			JIS	ASTM
1	Body (閥體)	Cast Steel (鑄鐵)	SCW42	A216WCB
		Stainless Steel (不銹鋼)	SCS13 / SCS14	A351CF8 / CF8M
2	Seat (閥座)	丁腈橡膠	Buna-N(NBR)	
		三元乙丙橡膠	EPDM	
3	Disc (閥板)	Cast Steel (鑄鋼)	SCW42	A216WCB
		Stainless Steel (不銹鋼)	SCS13 / SCS14	A351CF8 / CF8M
4	Shaft (閥杆)	Stainless Steel (不銹鋼)	SUS410	A182 F410
			SUS304	A182 F304
			SUS316	A182 F316
5	Set Pin (定位螺絲)	Stainless Steel (不銹鋼)	SUS316	A182 F316
6	Wormgear Box (蝸輪箱)	Cast Iron (灰鑄鐵)	FC200	A126 Class B
		Stainless Steel (不銹鋼)	SCS13	A351CF8
7	Hand Wheel (手輪)	Cast Iron (灰鑄鐵)	FC200, SGP	A126 Class B
8	Lever Handle (手柄)	Ductalloy Iron (球墨鑄鐵)	FCD450	A536-65-45-12
		Stainless Steel (不銹鋼)	SCS13	A351CF8

Dimension List (尺寸表)

SIZE	IN	2	2.5	3	4	5	6	8	10	12	14	16	18	20	24
	MM	50	65	80	100	125	150	200	250	300	350	400	450	500	600
VALVE	ØA	50	65	80	99	124	149	199	250	299	330	387	434	488	582
	ØB	100	117	132	153	189	217	263	328	379	410	480	525	585	693
VALVE	C	66	75	80	109	124	138	173	205	243	268	307	335	381	457
	KDLE NO	2	2	2	4	4	4	4	4	4	4	4	4	4	4
LEVER	E	43	45	46	52	56	56	60	68	78	78	102	114	127	154
	D	148	149	161	173	195	228	252	288	339	-	-	-	-	-
	P	170	170	170	250	250	250	410	410	410	-	-	-	-	-
WORM GEAR	N	107	107	107	107	107	107	135	135	135	-	-	-	-	-
	D	148	149	161	176	192	233	278	311	379	397	436	460	514	600
	P	170	170	170	170	170	170	260	260	260	270	270	270	300	300
ØH	160	160	160	160	160	160	250	250	250	325	325	325	385	385	



Parts & Material List (零部件及材質表)

Item 項次	Part Name 零部件名稱	Material 材質名稱	材質編號	
			JIS	ASTM
1	Body (閥體)	Ductile Iron (灰鑄鐵/球墨鑄鐵)	F200/FCD450	A126-8/A536
2	Disc (閥板)	Stainless Steel (不銹鋼)	SCS13/SCS14	A351-CF8/CF8M
3	Stop Pin (防撞杆)	Stainless Steel (不銹鋼)	SUS304	A182F304
4	Stem (閥杆)	Stainless Steel (不銹鋼)	SUS304	A182F304
5	Spring (彈簧)	Stainless Steel (不銹鋼)	SUS316	A182F316
6	Seat (閥座)	NBR(丁晴橡膠), EPDM(三元乙丙橡膠)		

Parts & Material List (零部件及材質表)

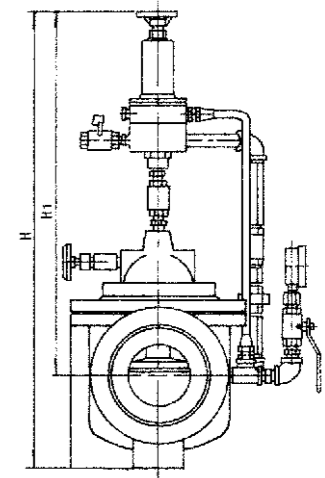
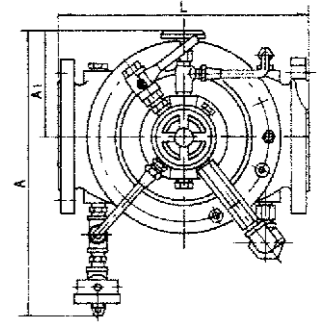
公稱口徑Size		A						B	C	D	E	備注Remark	
英寸(IN)	厘米(MM)	10K	16K	20K	125/150P	PN10/PN16							
2"	50A	101			105		72	45	54	32			
2 1/2"	65A	121			124		80	50	54	35			
3"	80A	131	137						91	67	57	43	
4"	100A	156	162	175	164	170	119	90	64	53			
5"	125A	187	197		194	196	141	112	70	65			
6"	150A	217	235	222	220	226	171	137	76	80			
8"	200A	267	279		275	-	226	188	95	108			
10"	250A	330	353	340	331	345	355	281	240	108	132		
12"	300A	375	403	410	386	403	420	327	282	143	154		
14"	350A	420	447	451	438	-	-	362	310	184	170		
16"	400A	483	507	511	491	-	-	420	360	191	200		
18"	450A	538	572	549	541	558	-	462	406	203	206		
20"	500A	592	627	606	596	620	-	512	457	213	242		
24"	600A	697	731	718	698	737	-	614	558	222	295		

* Other Size & Material Upon Your Request. (其他尺寸有材質可依要求制作)

The Table of Cv Calve (Cv值)

閥門口徑	2"	2.5"	3"	4"	5"	6"	8"	10"	12"	14"	16"	18"	20"	24"
Cv值	54.5	84.6	137	283	491	812	1499	2587	4214	5547	7549	10548	13325	21500

Model ZF500X pressure discharge/holding valve



作用與用途：當給水管中壓力超過泄壓閥額定壓力時，泄放閥開啓，防止管綫及設備因超壓而損壞，可用于高層建築消防測試循環系統之泄壓用，以防止水壓過高造成系統危險。

壓力等級：PN10、PN16、PN25 隔膜式：DN25-600
 活塞式：DN350-750

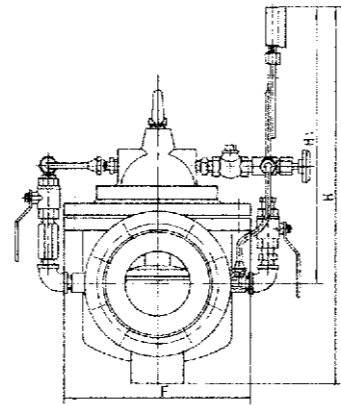
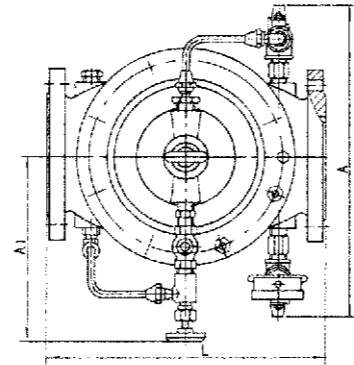
Function and purpose: the discharge valve will open when the pressure in the water-supply pipe is over the rated one of it to prevent the pipeline and equipments from being damaged due to extra-pressure, can be used for the pressure discharge of the fire-fighting testing cycle of high water pressure.

Pressure grade: PN10, PN16, PN25 Membranetype: DN25-600
 Piston type: DN350-750

公稱通徑 DN(mm)	尺寸 size(mm)							
	L	D	D1	A1	A	H1	H	Z-Φd
25	205	115	85	130	330	460	555	4-Φ14
32	210	135	100	130	330	460	555	4-Φ18
40	210	145	110	135	345	518	590	4-Φ18
50	240	165	125	140	346	518	590	4-Φ18
65	275	180	145	145	355	525	610	4-Φ18
80	290	200	160	150	360	535	630	8-Φ18
100	370	220	180	155	400	650	750	8-Φ18
125	400	250	210	165	420	680	810	8-Φ18
150	455	285	240	180	450	710	850	12-Φ23
200	550	340	295	210	480	780	999	12-Φ25
250	745	405	355	225	530	830	1200	12-Φ25
300	800	460	410	250	580	880	1300	16-Φ25
350	830	520	470	280	620	950	1350	16-Φ25
400	860	580	525	285	668	990	1430	16-Φ30
450	860	640	585	290	700	1050	1450	20-Φ30
500	950	705	650	330	740	1090	1588	20-Φ34
600	1100	840	770	350	760	1111	1999	20-Φ41

ZF700X型水泵控制閥

ZF700X water-pump control valve



作用與用途：該閥能够控制水泵的止回閥，當水泵停止運行前，由進口壓力先關閉主閥的90%時，使水泵自動停止，剩下的10%由回水關閉，可完全防止水錘現象產生。適用於工礦、企業、高層建築中由水泵直接供水及生活用水管網系統。

壓力等級：PN10、PN16、PN25 隔膜式：DN25-600
 活塞式：DN350-750

Function and purpose: adjusts and controls the open-close speed of a check valve and, when the water pump starts or stops running, is fit for the site adjustment to an optimum open or close speed and suitable for high buildings to reduce the phenomenon of water hammer to get a safe and silent effect of open-close.

Pressure grade: PN10, PN16, PN25 Membranetype: DN25-600
 Piston type: DN350-750

公稱通徑 DN(mm)	尺寸 size(mm)								
	L	D	D1	A1	A	H1	H	F	Z-Φd
25	205	115	85	190	270	100	160	110	4-Φ14
32	210	135	100	200	280	105	175	115	4-Φ18
40	210	145	110	210	300	130	210	160	4-Φ18
50	240	165	125	215	320	135	230	170	4-Φ18
65	275	180	145	230	340	150	270	185	4-Φ18
80	290	200	160	240	350	180	290	220	8-Φ18
100	370	220	180	255	400	230	370	280	8-Φ18
125	400	250	210	270	420	285	420	320	8-Φ18
150	455	285	240	280	430	320	460	370	12-Φ23
200	550	340	295	290	450	415	720	460	12-Φ25
250	745	405	355	310	460	500	770	525	12-Φ25
300	800	460	410	330	470	600	900	610	16-Φ25
350	830	520	470	350	480	635	1035	700	16-Φ25
400	860	580	525	360	495	660	1400	750	16-Φ30
450	860	640	585	380	520	680	1440	780	20-Φ30
500	950	705	650	395	550	730	1680	830	20-Φ34
600	1100	840	770	420	570	780	1880	888	20-Φ41

FZH745X/JD745X 多功能水泵控制閥

FZH745X/JD745X multi-functional water pump control valve

用途

安裝在高層建築給水系統以及其它給水系統的水泵出口管道上，防止介質倒流，防止水錘及水擊現象的產生。一閥兼具電動閥，逆止閥和水錘消除器三種功能，可有效地提高供水系統的安全可靠性。

Purpose

Mounted on the outlet pipeline of the water pump in the water supply system of high buildings and others and used to prevent the medium against back flow and water hammer and shock from being produced. The one valve has three functions as an electric valve, back valve and water hammer remover and effectively raise the safety of the water supply system.

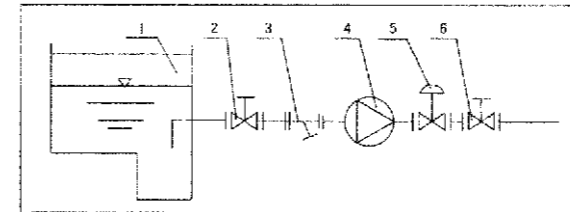
特點

- 1、消除水錘效果好：將緩開、速閉、緩閉消除水錘的技術原理一體化，防止開泵錘和停泵水錘的產生。
- 2、操作方便：只需操作水泵電機啓閉按鈕，閥門即按照水泵操作規程實現自動關閉。
- 3、節能效果好：閥體採用了全通道流綫型直流式設計，壓力損失小，流量大，且體積小，重量輕。

Characters

1. Good effect of water hammer removal: integrating the slow-open. Quick-close, slow-close water hammer removal technical principles to prevent the water hammers at both starting and stopping the pump from being produced.
2. Easy operation: the valve will realize the automatic close per the operation rules of the water pump by only operating the open-close button of the motor of the water pump.
3. Good energy-saving effect: the valve body is designed in the full passage streamline straight flow type, small pressure lose, big flow and small volume and light weight.

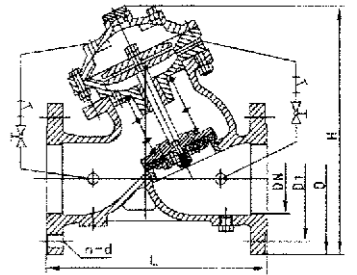
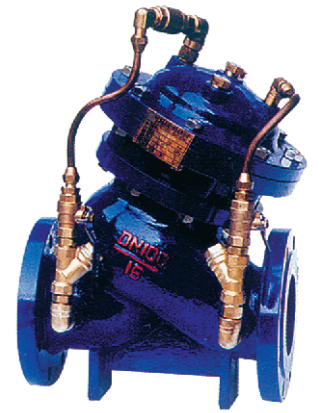
安裝示意圖 Schematic diagram of erection



- 1、水池 2、彈性密封閘閥 3、過濾器 4、水泵 5、多功能水泵控制閥 6、彈性座封閘閥
 1. Water pool 2. Elastic sealed gate valve 3. Filter 4. Water pump 5. Multi-functional water pump control valve 6. Elastomer sealed gate valve

主要結構尺寸 Dimensions of main structure

公稱通徑 DN(mm)	L	H	D			D1			n-d		
			1.0MPa	1.6MPa	2.5MPa	1.0MPa	1.6MPa	2.5MPa	1.0MPa	1.6MPa	2.5MPa
50	240	293	165	165	165	125	125	125	4-18	4-18	4-18
65	270	328	185	185	185	145	145	145	4-18	4-18	8-18
80	300	364	200	200	200	160	160	160	8-18	8-18	8-18
100	320	418	220	220	235	180	180	190	8-18	8-18	8-22
125	400	481	250	250	270	210	210	220	8-18	8-18	8-26
150	480	543	285	285	300	240	240	250	8-22	8-22	8-26
200	500	673	340	340	360	295	295	310	8-22	12-22	12-26
250	605	792	395	405	425	350	355	370	12-22	12-26	12-30
300	698	927	445	460	485	400	410	430	12-22	12-26	16-30
350	787	957	505	520	555	460	470	490	16-22	16-26	16-33
400	914	1188	565	580	620	515	525	550	16-26	16-30	16-36
450	978	1218	615	640	670	565	585	600	20-26	20-30	20-36
500	978	1256	670	715	730	620	650	660	20-26	20-33	20-36
600	1200	1600	780	840		725	770		20-30	20-36	
700	1450	1750	895	910		840	840		24-30	24-36	
800	1560	1900	1015	1025		950	950		24-33	24-39	
900	1800	2100	1115			1050			28-33		
1000	2000	2400	1230			1160			28-36		



主要技術參數

- 1、公稱壓力：1.0MPa、1.6MPa、2.5MPa
- 2、最低動作壓力：> 0.04MPa
- 3、緩閉時間：3-60s（可調）
- 4、適用介質：水
- 5、介質溫度：0-80℃

Main technical paramter

1. PN: 1.0MPa, 1.6MPa, 2.5MPa
2. Lowest action pressure: > 0.04MPa
3. Slow-close time: 3-60s(adjustable)
4. Suitable medium: water
5. Medium temperature: 0-80℃

ZFA745X 泄壓/持壓閥

ZFA745X pressure discharge/holding valve

用途

安裝在高層建築、消防給水系統以及其它給水系統的管道上，當給水管路中壓力超過泄壓閥設定壓力時，泄壓閥自動開啓快速泄壓，保護管綫的安全，也要作持壓閥門，保障主閥上游的供水壓力。

Purpose

Mounted on the pipeline in the high building's, fire-fighting and other water supply systems. As a pressure discharge valve, it will automatically open to quickly discharge the pressure when the pressure in the water supply a holding valve, it is used to guarantee the water supply pressure on the upstream of the main valve.

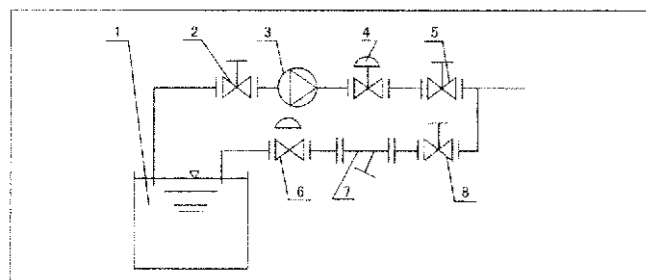
特點

- 1、能準確保持不變的安全設定壓力，一旦超壓，泄壓閥迅速打開，及時泄壓。
- 2、關閉平穩可靠、消除壓力余波。

Characters

1. Capable of accurately holding the set pressure of safety unchanged and, once it is over, the valve will quickly open to discharge it on time.
2. Stably and reliably closed, eliminating the residual wave of the pressure.

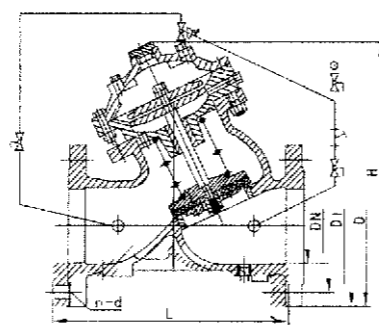
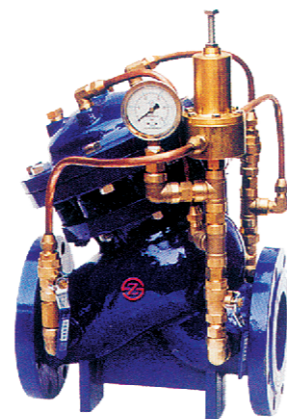
安裝示意圖 Schematic diagram of erection



- 1、水池 2、彈性密封閘閥 3、水泵 4、多功能水泵控制閥 5、彈性座封閘閥
6、彈性座封閘閥 7、水泵 8、泄壓閥
1. Water pool 2. Elastic sealed gate valve 3. Water pump
4. Multi-functional water pump control valve 7. Filter 8. Pressure discharge valve

主要結構尺寸 Dimensions of main structure

公稱通徑 DN(mm)	L	H	D			D1			n-d		
			1.0MPa	1.6MPa	2.5MPa	1.0MPa	1.6MPa	2.5MPa	1.0MPa	1.6MPa	2.5MPa
50	240	300	165	165	165	125	125	125	4-18	4-18	4-18
65	270	337	185	185	185	145	145	145	4-18	4-18	8-18
80	300	467	200	200	200	160	160	160	8-18	8-18	8-18
100	320	520	220	220	235	180	180	190	8-18	8-18	8-22
125	400	580	250	250	270	210	210	220	8-18	8-18	8-26
150	480	640	285	285	300	240	240	250	8-22	8-22	8-26
200	500	778	340	340	360	295	295	310	8-22	12-22	12-26
250	605	889	395	405	425	350	355	370	12-22	12-26	12-30
300	698	1010	445	460	485	400	410	430	12-22	12-26	16-30
350	787	1037	505	520	555	460	470	490	16-22	16-26	16-33
400	914	1264	565	580	620	515	525	550	16-26	16-30	16-36
450	978	1294	615	640	670	565	585	600	20-26	20-30	20-36
500	978	1324	670	715	730	620	650	660	20-26	20-33	20-36
600	1200	1600	780	840		725	770		20-30	20-36	
700	1450	1750	895	910		840	840		24-30	24-36	
800	1560	1900	1015	1025		950	950		24-33	24-39	
900	1800	2100	1115			1050			28-33		
1000	2000	2400	1230			1160			28-36		



主要技術參數

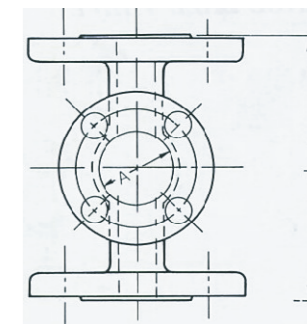
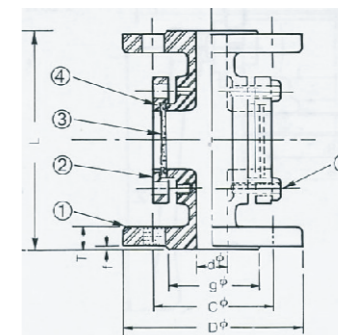
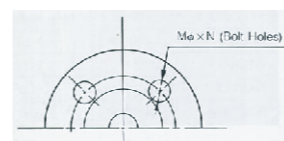
- 1、公稱壓力: 1.0MPa、1.6MPa、2.5MPa
- 2、調壓範圍: 0.05-0.9Mpa、0.12-1.4MPa、0.12-2.4MPa
- 3、適用介質: 水
- 4、介質溫度: 0-80℃

Main technical paramter

1. PN: 1.0MPa、1.6MPa、2.5MPa
2. Range of pressure adjustment: 0.05-0.9Mpa、0.12-1.4MPa、0.12-2.4MPa
3. Suitable medium: water
4. Medium temperature: 0-80℃

觀視閥 SIGHT GLASS

JIS 10K SIGHT FLOW INDICATORS

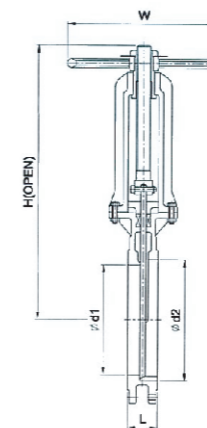


	零件名稱	材質
1	閥體	FC、WCB、CF8、CF8M
2	側蓋	FC、WCB、CF8、CF8M
3	觀測面	GLASS+TEFLON
4	螺栓	F304、316

尺寸	1/2B	3/4B	1B	1 1/4B	1 1/2B	2B	2 1/2B	3B	4B
d	15	20	26	32	40	50	65	80	100
L	130	145	160	170	174	210	230	240	260
D	95	100	125	135	140	155	175	185	210
C	70	75	90	100	105	120	140	150	175
g	52	58	70	80	85	100	120	130	165
T	12	14	14	16	16	16	16	18	18
F	1	1	1	2	2	2	2	2	2
A	32	36	45	48	50	60	70	80	100
N x N	15 x 4	15 x 4	19 x 4	19 x 1	19 x 4	19 x 4	19 x 4	19 x 8	19 x 8

刀閘閥 KINFE GATE VALVES

※另可提供法蘭形式及金屬閥座

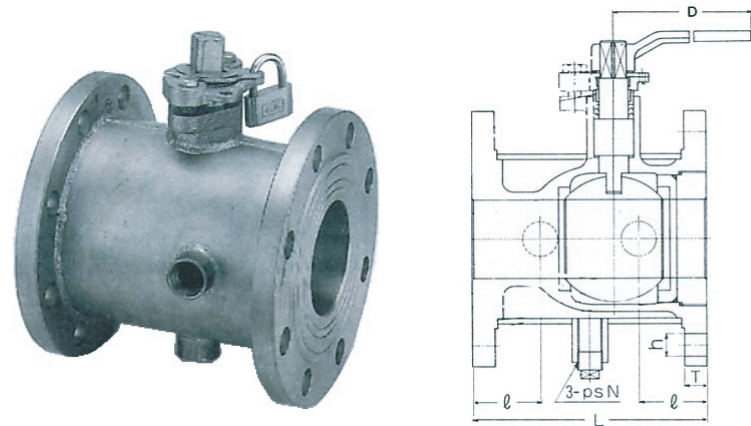


尺寸(mm)	50	80	100	150	200	250	300	350	400	450	500	600
L	48	51	51	57	70	70	76	76	89	89	114	114
d1	50	80	100	150	200	250	300	340	387	438	540	591
d2	65	100	120	172	224	280	330	370	415	470	575	630
H	340	435	519	655	860	1030	1175	1325	1448	1702	1829	2121
W	200	200	250	250	300	400	400	400	450	500	630	710
Weight(kg)	9	13	15	25	43	60	95	160	186	223	323	422

	零件名稱	材質
閥體	BODY	ASTM A351 GrCF8
閥軛	YOKE	ASTM A351 GrCF8
閥板	KNIFE(BRADE)	ASTM A276 Gr304
填料蓋	GLAND	ASTM A351 GrCF8
閥杆	STEN	ASTM A276 Gr304
手輪轉盤	HANDWHEEL	ASTM A395
止推華司	THRUST WASHER	ASTM A240 Gr304
螺栓	YOKE BOLT	ASTM A193 GrB8
螺母	YOKE NUT	ASTM A194 Gr8
填料	PACKING	ASBESTUS+TEFLUN

夾套式球塞閥 JACKET BALL VALVE

JIS 10K



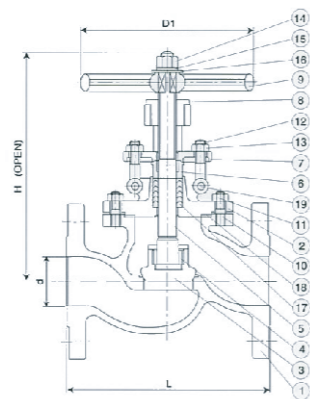
測試壓力 (Test Pressure)	
閥體 Body	24kg/cm ² (water)
閥座 Seat	6kg/cm ² (ARI)
外罩 Jacket	6kg/cm ² (ARI)

零件名稱	材質		
		304	316
閥體	Body	Aisi 304	Aisi 316
側蓋	End Cap	Aisi 304	Aisi 316
調節球	Ball	Aisi 304	Aisi 316
中軸	Stem	Aisi 304	Aisi 316
密封材/閥座	Seat/Seat	Ptfe	Ptfe
填料蓋	Gland	Aisi 304	Aisi 316
密封墊片	Gasket	Ptfe	Ptfe
手把	Handle	Fcd	Fcd
螺栓	Bolt	Aisi 304	Aisi 316

尺寸 (Size)	英寸(in) 公厘(mm)	1/2	3/4	1	1 1/2	2	2 1/2	3	4	6
		口徑 Bore size	15	20	25	40	50	65	80	100
法蘭間距 End to end	110	120	130	165	180	190	200	230	270	
法蘭孔直徑 Hlight	127	133	137	155	177	184	184	235	286	
手把長度 Handle	130	150	150	230	320	320	320	400	800	
P	Rp1/2	Rp1/2	Rp1/2	Rp1/2	Rp1/2	Rp1/2	Rp1/2	Rp3/4	Rp3/4	
法蘭 Flanged size	40	40	50	65	80	100	100	150	200	

針閥 NEEDLE VALVE

ANSI/API 150#, 300#, JIS10K, PN16

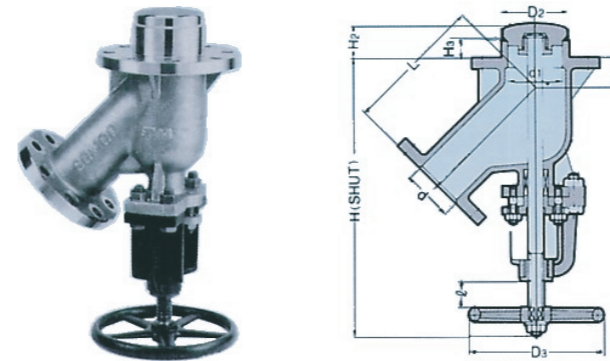


NO.	零件名稱	材質
1	本體 Body	ASTM A351-CF8M
2	上蓋 Bunnet	ASTM A351-CF8M
3	閥瓣 Disc	ASTM A351-CF8M
4	閥杆固定環 Stem Ring	ASTM A276-316
5	閥杆 Stem	ASTM A276-316
6	螺栓 Gland	ASTM A276-304
7	螺栓鎖片 Gland Flange	ASTM A351-CF8M
8	閥軛 Yoke Sleeve	SUS403
9	手動轉輪 Handle Wheel	ASTM A356 65-45-12
10	螺栓 Bonnet Bolt	ASTM A193-B8
11	螺帽 Bonnet Nut	ASTM A194-8
12	單眼螺栓 Eye Bolt	ASTM A193-B8
13	螺帽 Gland Nut	ASTM A194-8
14	螺帽 Nut	S.S. 400
15	華司 Washer	S.S. 400
16	銘牌 Name Plate	Aluminum
17	填縫料 Packing	PTFE(Option:Grafoil)
18	大薄片 Gasket	PTFE(Option:Grafoil)
19	鎖 Hinge Pin	ASTM A276-304

尺寸	L			H		D1	
	150LB/JIS10K	300LB	PN16	150LB/JIS10K/PN16	300LB	150LB/JIS10K/PN16	300LB
15	108	152	130	172	188	100	100
20	117	178	150	172	188	100	100
25	127	203	160	175	190	100	100
40	165	229	200	207	236	140	160
50	203	267	230	232	290	160	180
65	216	292	290	273	298	180	200
80	241	318	310	303	343	200	250
100	292	356	350	340	398	224	300
150	406	444	480	448	558	300	400
200	495	559	600	545	665	355	560

桶底閥 Y-TYPE BOTTOM TANK VALVE

10K/150# OPEN INTO VALVE (開至桶型)

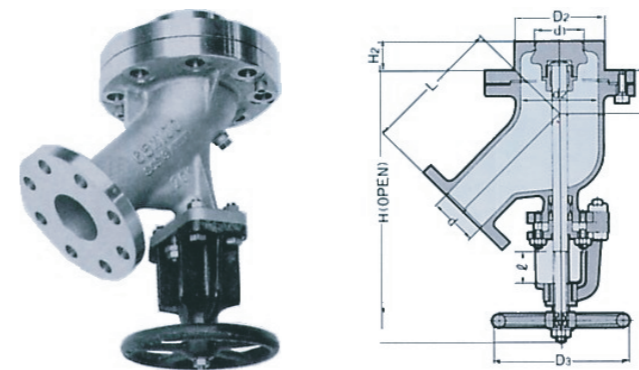


零件名稱	材質	
閥體	Body	ASTM A351 Gr.CF8
閥盤	Disc	ASTM A351 Gr.CF8
閥杆	Stem	ASTM A276 Gr.304
閥軛	Yoke	ASTM A351 Gr.CF8
手輪轉盤	Hand Wheel	ASTM A395
螺栓/螺帽	Bolt/Nut	ASTM A193 Gr.B8/A194 Gr.8
填料	Packing	PTFE+Asbestos

CLASS 150											尺寸: mm
SIZE	d	d1	D2	D3	L	T	H1	H2	H3	H	
25 × 40	25	43	55	125	140	31	35	40	24	283	
40 × 50	40	48	60	140	170	36	40	40	25	309	
50 × 65	50	54	68	160	170	37	45	45	26	343	
50 × 80	50	65	81	180	170	47	50	45	26	352	
65 × 80	65	76	96	200	215	48	48	43	26	425	
80 × 100	80	90	107	224	230	49	50	51	27	465	
100 × 125	100	104	122	280	265	62	65	55	28	552	
125 × 150	125	144	172	300	300	66	80	65	35	620	
125 × 200	125	174	210	355	330	67	100	75	39	662	
150 × 200	150	174	210	355	330	75	90	75	39	670	

桶底閥 Y-TYPE BOTTOM TANK VALVE

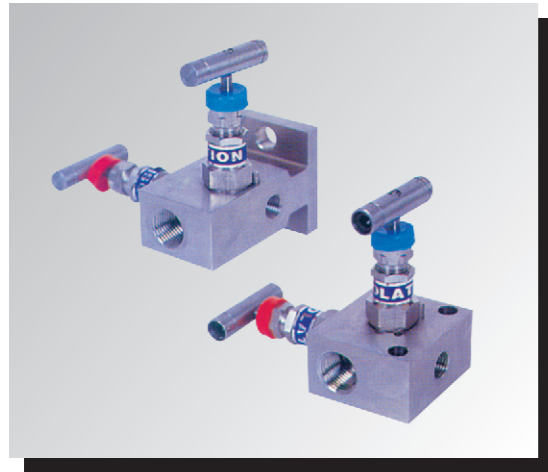
10K/150# OPEN INTO VALVE (開至閥型)



零件名稱	材質	
閥體	Body	ASTM A351 Gr.CF8
閥盤	Disc	ASTM A351 Gr.CF8
閥杆	Stem	ASTM A276 Gr.304
閥軛	Yoke	ASTM A351 Gr.CF8
手輪轉盤	Hand Wheel	ASTM A395
螺栓	Gland Bolt/Nut	ASTM A193 Gr.B8/A194 Gr.8
螺帽	Yoke Bolt/Nut	ASTM A193 Gr.B8/A194 Gr.8
填料	Packing	PTFE+Asbestos
密封蓋	Gasket	PTFE

CLASS 150											尺寸: mm
SIZE	d	d1	D2	D3	d2	L	I	H2	H3	H	
25 × 50	25	30	70	125	60	170	23	60	23	319	
40 × 65	40	40	85	125	75	170	31	62	30	331	
50 × 80	50	50	95	160	80	170	38	64	38	368	
65 × 80	65	65	120	180	104	215	47	70	45	429	
80 × 125	80	80	150	224	130	230	55	76	50	507	
100 × 150	100	100	175	280	155	265	66	108	55	609	
125 × 200	125	125	220	300	198	300	73	108	60	665	
150 × 250	150	150	250	355	228	310	81	115	65	681	

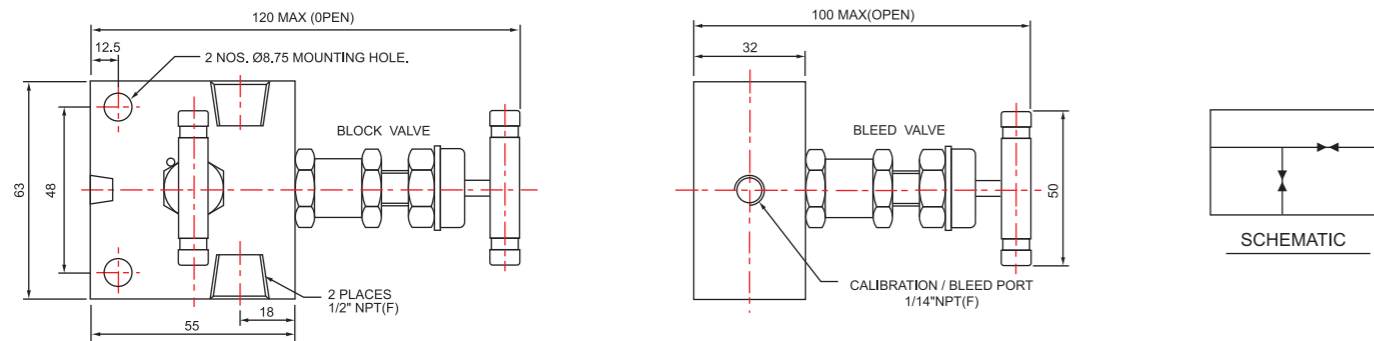
Two Valve Manifolds is designed static pressure instruments application



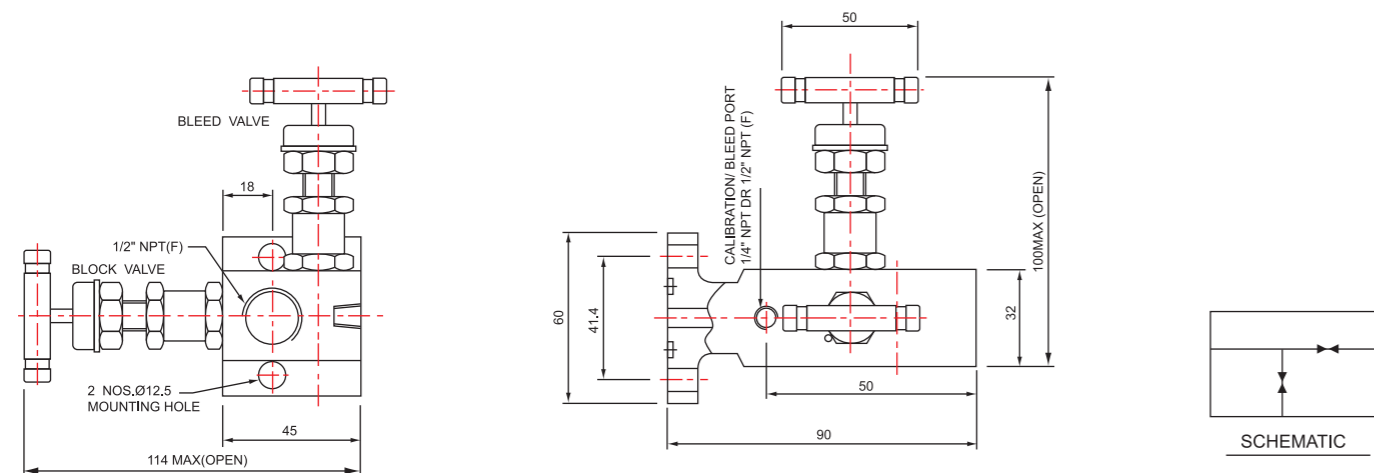
KSW two valve calibration manifold provides an economical and convenient method of blocking, bleeding and calibrating pressure instruments. The block type(R Type) may be mounted rigidly to a mounting bracket, providing a safe isolation valve and the single-flanged type(T Type) is directly mounted while reducing the number of fittings and space required for installation.

KSW 2閥組包含一只隔離閥及一只排放閥，使用靜態壓力儀器做為隔離，排放及校正應用。R型(一體型)閥體安裝于固定支架。T型(單法蘭型)直接安裝于壓力儀器。2閥組提供經濟及方便安裝方式可減少配管時接頭配件及空間。

Block Type(R Type), 一體型外型尺寸圖



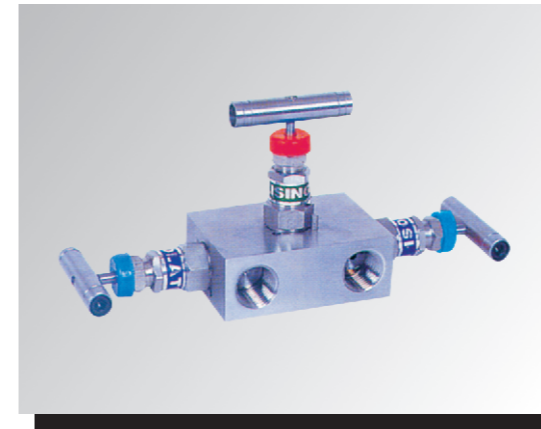
Single Flange Type(T Type), 單法蘭型外型尺寸圖



Three Valve Manifolds is designed for Flow Static, Static pressure, Liquid Level instruments application

KSW three valve manifolds contain two block valve and one equalizing valve. Perform the block, equalizing and vent requirement of differential pressure by providing one compact assembly.

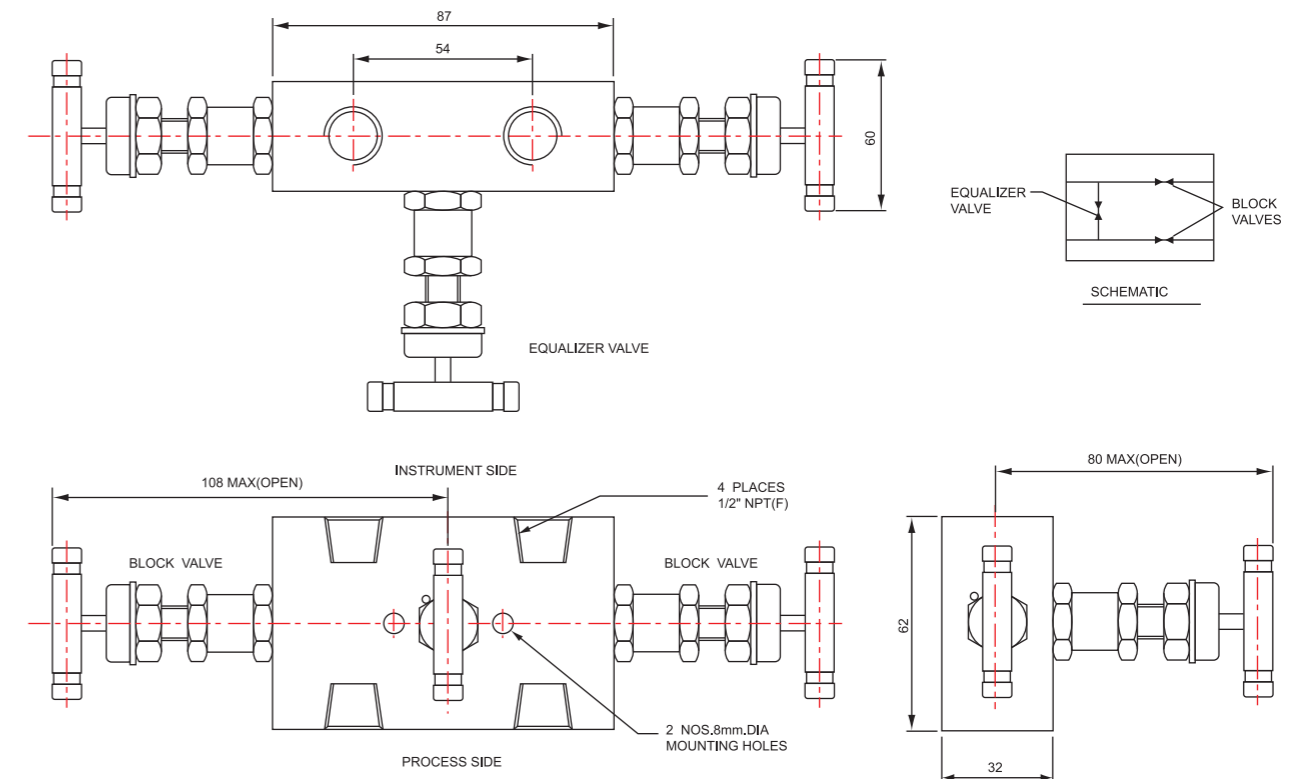
KWS 3閥組包含二只隔離閥及一只平衡閥，應用于差壓儀器于高/低壓隔離，平衡及排放。



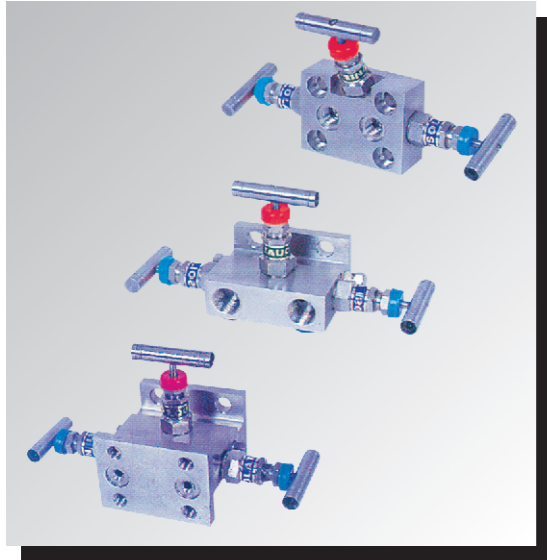
The block type (R type, pipe to pipe) in-line three valve manifold is designed for differential pressure or flow recorder to impulse tubing. Connections are 1/2" NPT on industry standard and 2-1/8" (54mm) center-to-center dimension (Model fpt 2-3/16" & 2-1/4" center-to-center dimensions are available)

R型(一體型, 1/2"NPT內螺紋, 子對管子) 3閥組應用于流量記錄器及差壓儀器。標準連接方式為1/2" NPT內螺紋及2-1/8"(54mm)螺紋中心對中心距離(其它螺紋中心對中心距離2-3/16"及2-1/4"亦可選擇。

Block Type(R Type), 一體型外型尺寸圖



Three Valve Manifolds is designed for Flow Static, Static pressure, Liquid Level instruments application



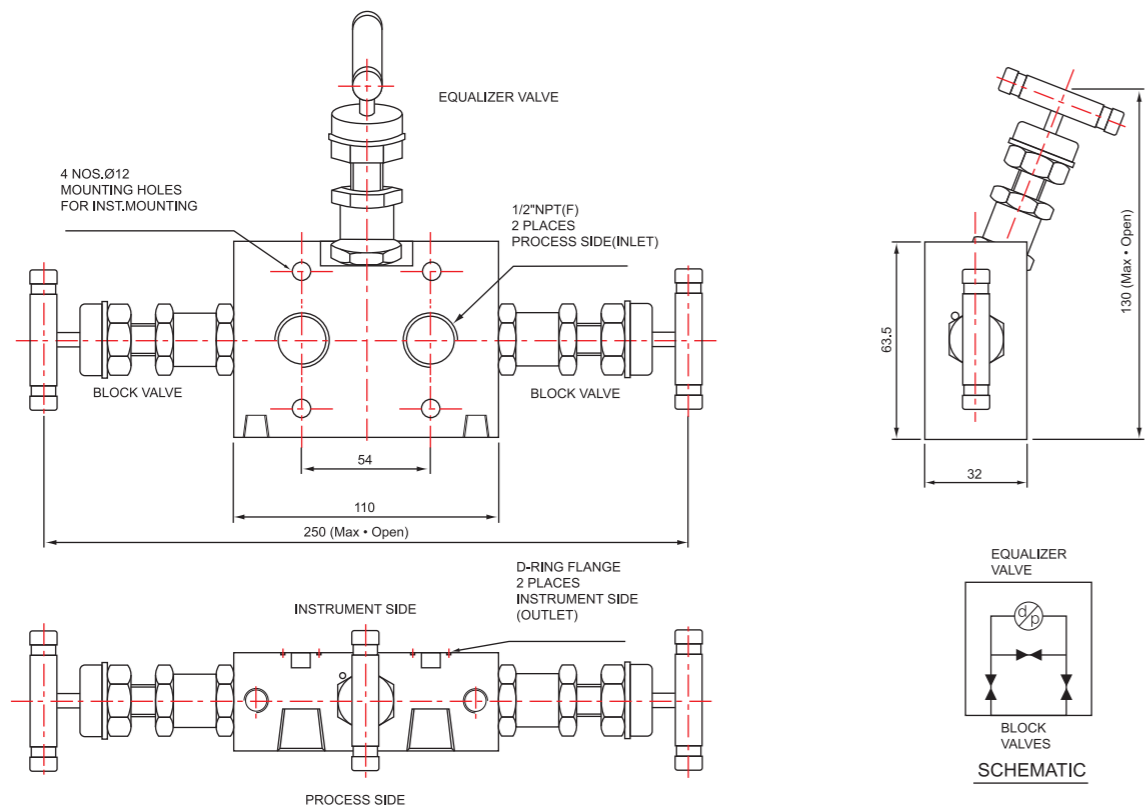
D type (direct mount, pipe to flange), T type (single flange, pipe to flange) and H type (dual flange, flange to flange) manifolds bolt directly to the differential pressure instruments which eliminate the need for unnecessary piping, valve and fittings.

D型(一體型, 管子對法蘭), T型(單法蘭型, 管子對法蘭)及H型(雙法蘭型, 法蘭對法蘭)。以上3閥組直接安裝于差壓儀器, 可減少不必要的管子, 閥門及配件。

D type manifold is a light weight and compact and direct mounting to standard differential pressure transmitters. T Type manifold comes complete with mounting kit for quick and easy installation to a pipe stand. H type manifold is designed for close.

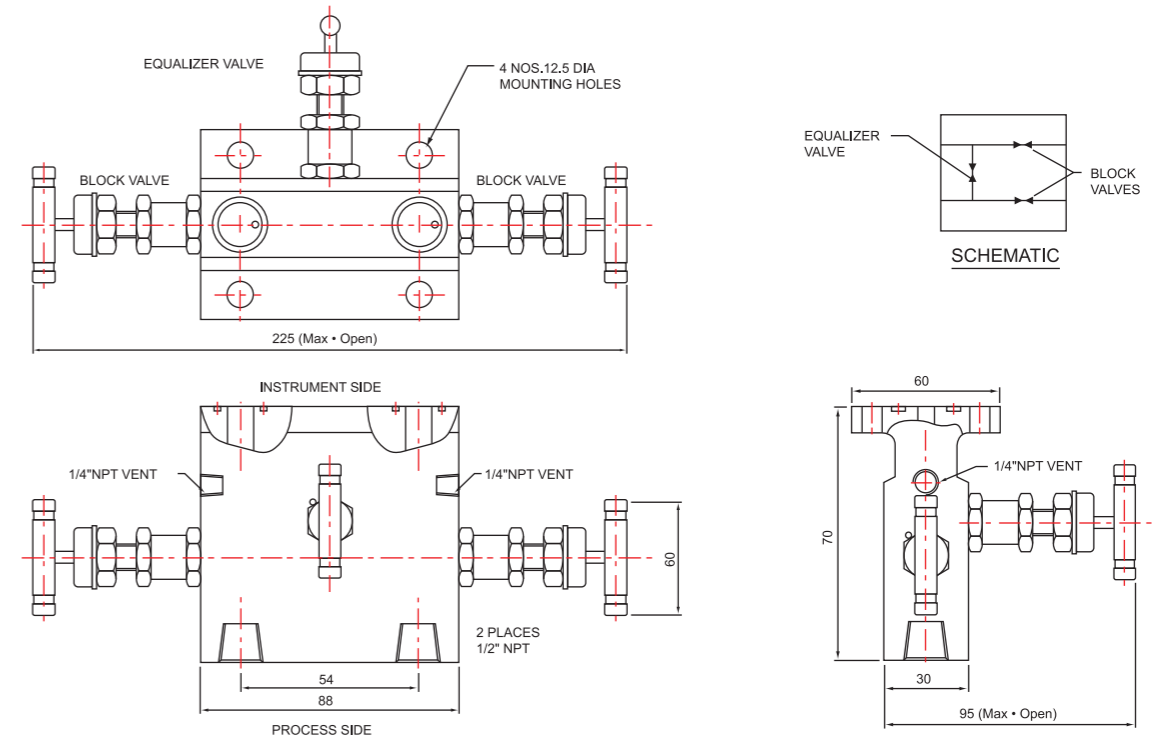
D型3閥組整體外型簡潔, 重量輕直接安裝于標準差壓變送器。T型3閥組經由支架可輕易安裝于2"支架。H型3閥組設計應用於流孔板法蘭或流孔板變換法蘭。

Direct Mount Type(D Type, Pipe to Flange) Dimension(一體型外型尺寸圖)

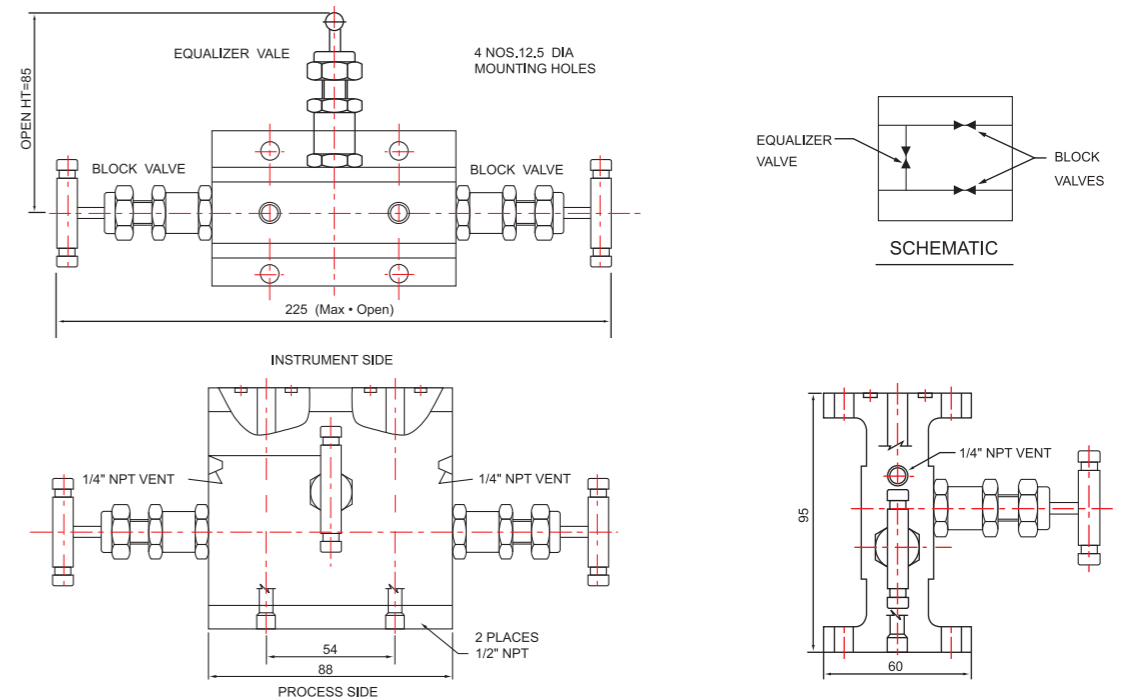


Three Valve Manifolds is designed for Flow Static, Static pressure, Liquid Level instruments application

Single Flange Type(T Type, Pipe to Flange) Dimension(T型外型尺寸圖)



Dual Flange Type(H Type, Flange to Flange) Dimension(H型外型尺寸圖)



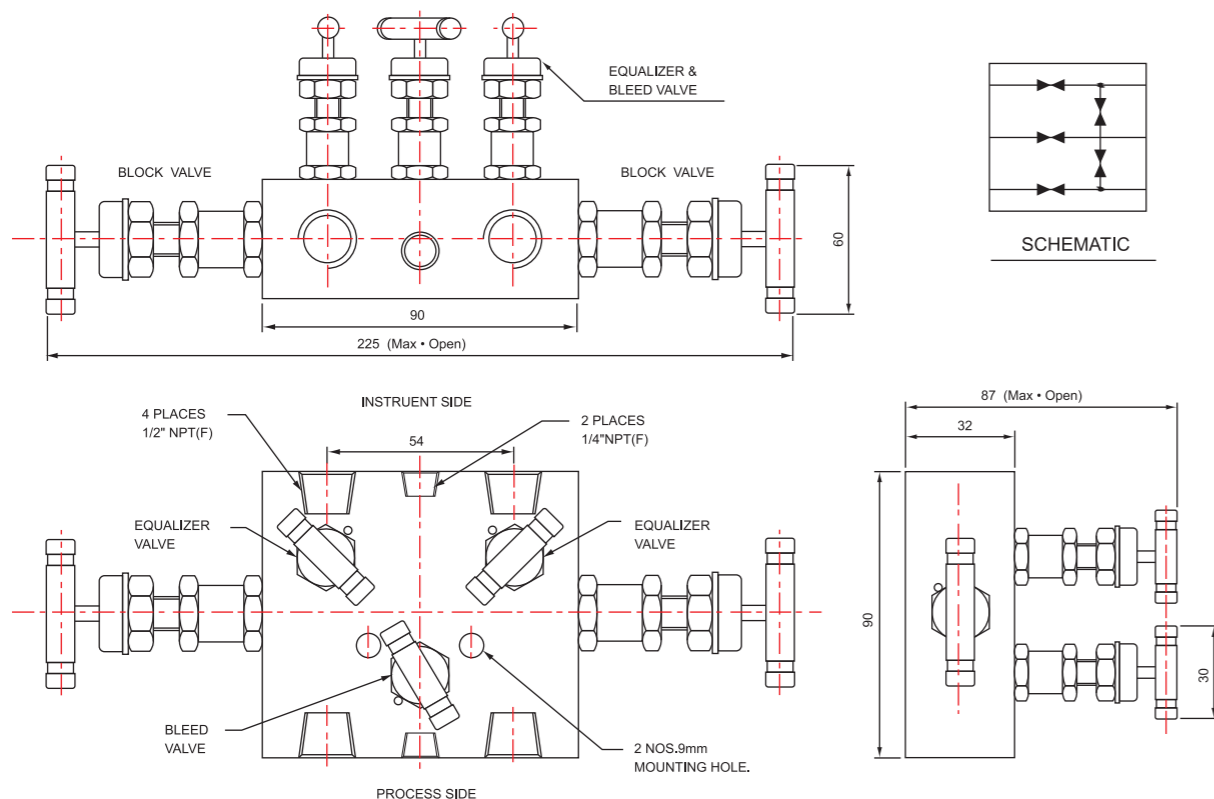
Three Valve Manifolds is designed for natural gas metering application



KSW five manifolds are designed for natural gas application. The five manifolds consists of two shut off valves, two equalizing valves and a single vent valve which takes the place of the conventional piped up 5-valve manifold generally found on field meters or gas service differential pressure instrument. There are three type five valve manifold. Block type(R Type) - pipe to pipe, Single Flange type(R Type) - pipe to flange and Dual Flange type(H type) - flange to flange, To meet the requirements for differential pressure instruments application.

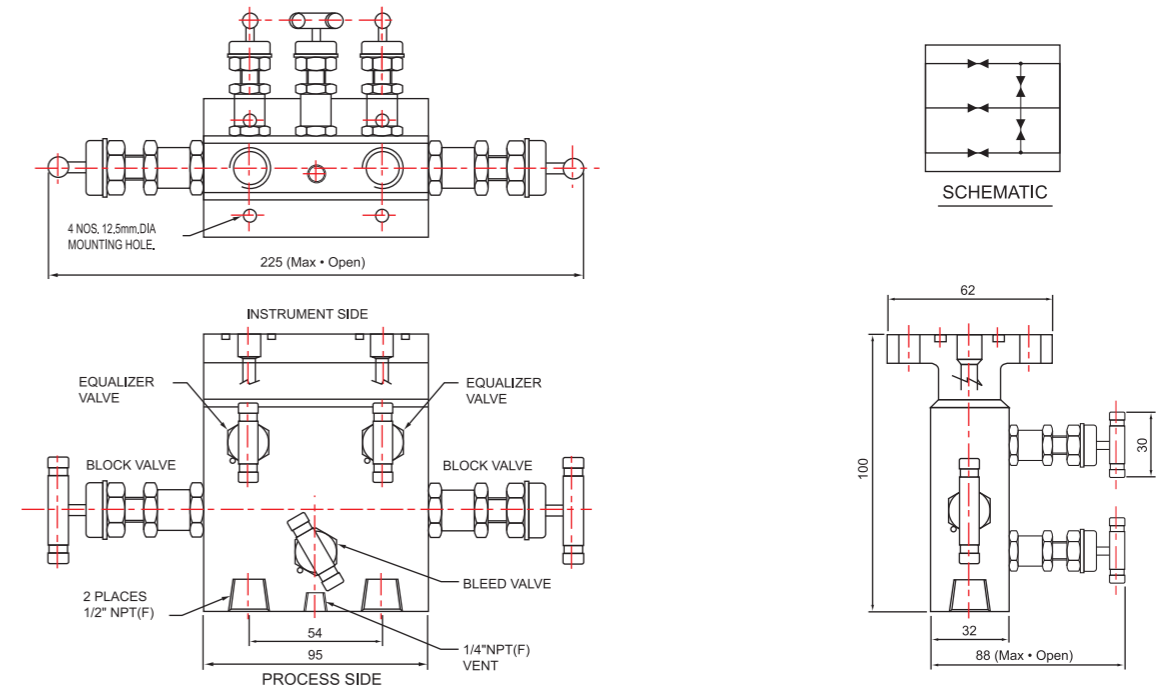
KSW-5閥組設計于天然氣應用，其組成包含兩只關斷閥，兩只平衡閥及一只排放閥以及代替傳統5閥組構造。KSW-5閥組共有3種型式。R型體(一體型，管子對管子)，T型閥體(單法蘭型，管子對法蘭)，H型閥體(雙法蘭型)以符合差壓儀器不同應用需求。

Block Type(R Type, Pipe to Pipe) Dimension(一體型外型尺寸圖)



Five Valve Manifolds is designed for natural gas metering application

Single Flange Type(T Type, Pipe to Flange) Dimension(T型外型尺寸圖)



Dual Flange Type(H Type, Flange to Flange) Dimension(H型外型尺寸圖)

